





## Application for Transfer of Well Permit or Registration

TRANSFER FROM		TRANSFER TO			
Name	OGO#	Name	OGO#		
T.W. PHILLIPS GAS AND OIL CO. 12913		T.W. PHILLIPS GAS SUPPLY CORP.			
<b>WELLS TO BE TRANSFERRED</b>					
DEP Permit/Reg # USE (Well API #)	County	Municipality	Farm Name DEP Name (Co. Name)	Well No.	Proj/ Ser #
003 20084	Allegheny	Fawn	WE, EG & MR MARVIN & HM SCHWARTZ (Marvin, A. N. #2 135A)	#2	
003 20051	Allegheny	Fawn	WS, EG & MR MARVIN & HM SCHWARTZ (Marvin, A. N. #3 135A)	#3	
003 20070	Allegheny	Fawn	GEORGE E SEEL (Seel, William #1 70A)	#1	
003 20071	Allegheny	Fawn	GEORGE E SEEL (Seel, William #2 70A)	#2	
003 20038	Allegheny	Fawn	WALTER KOMOSINSKI (Smith, A. H. #1 92A)	#1	
003 00664	Allegheny	Fawn	A H SMITH (Smith, A. H. #3 92A)	#3	
003 00655	Allegheny	Frazier	G P HILL (Hill, Grace P. #2 92A)	#2	
003 00656	Allegheny	Frazier	C KONESKY (Konesky, C. A. #1 60A)	#1	
003 20086	Allegheny	Harrison	W F BURTNER (Burtner, G. H. #2 92A)	#2	
003 00652	Allegheny	Harrison	G BURTNER (Burtner, G. H. #3 92A)	#3	
003 20081	Allegheny	Harrison	WILLIAM BURTNER (Burtner, William #1 80A)	#1	
003 20083	Allegheny	Harrison	WILLIAM BURTNER (Burtner, William #2 80A)	#2	
003 00653	Allegheny	Harrison	D HARRISON (Harrison, David H. #2 145A)	#2	
003 21025	Allegheny	Harrison	YEAGER & SOLOMON (Parke, John S. (Smith) #1 95A)	#1	
003 20073	Allegheny	Harrison	JOSEPH HRANICA (Vogley, George B. #1 10A)	#1	
003 20087	Allegheny	Harrison	ST JOSEPH'S ROMAN CATH CHURCH (Warner, Mrs. S. B. #1 18A)	#1	
003 20057	Allegheny	Penn	L BLANCHE JONES (Jones, Nathan #1 43A)	#1	
003 00671	Allegheny	Plum	J M CLEMENTS (Clements, J. M. #3 50A)	#3	
003 00670	Allegheny	Plum	J A CLEMENTS (Clements, J. M. #1 100A)	#1	
003 00672	Allegheny	Plum	J DUER HRS (Duer, John G. (Heils) #1 13A)	#1	
003 00673	Allegheny	Plum	JELLIOTT (Elliot, Jane E. & S. A. #2 123A)	#2	
003 20031	Allegheny	Plum	IVY B CLEMENTS (Elliot, Jane E. & S. A. #3 123A)	#3	
003 00674	Allegheny	Plum	M HAMILTON (Hamilton, Margaret L. #1 108A)	#1	
003 20037	Allegheny	Plum	G E RENOIS (McDowell, D. N. #3 35A)	#3	
003 00661	Allegheny	Plum	D MCKEAN (McKean, Daniel #1 115A)	#1	
003 00662	Allegheny	Plum	D MCKEAN (McKean, Daniel #2 115A)	#2	
003 20053	Allegheny	Plum	VALLEY PROPERTIES (McLaughlin, Jane #1 118A)	#1	
003 20060	Allegheny	Plum	VALLEY PROPERTIES INC (McLaughlin, Jane #2 118A)	#2	
003 20061	Allegheny	Plum	VALLEY PROPERTIES INC (McLaughlin, Jane #3 118A)	#3	
003 20056	Allegheny	Plum	SANDRA L & BERTHA A YOUNG (Morath, Isador #1 74A)	#1	
003 20058	Allegheny	Plum	GEORGE O STEUERNAGEL (Steuernagel & Keaton #1 28A)	#1	
003 20062	Allegheny	Plum	CHARLES H TECKMEYER (Teckmeyer, Charles H. #1 37A)	#1	
005 20529	Armstrong	Boggs	GEORGE C JOHNSTON (Adams, Clark M. #1 100A)	#1	
005 20562	Armstrong	Cowanshannock	R & H GOLDSTROHM (Barker, H. N. #1 60A)	#1	
005 20779	Armstrong	Cowanshannock	FLORENCE H BOYER (Boyer, Florence #2 40A)	#2	
005 20583	Armstrong	Cowanshannock	JOSEPH & DONNA MIKITA (Boyer, Vernon #1 57A)	#1	
005 20366	Armstrong	Cowanshannock	VERNON BOYER (Boyer, Vernon #3 57A)	#3	
005 01125	Armstrong	Cowanshannock	D L CLOWSER (Clowser, D. L. #1 139A)	#1	
005 20642	Armstrong	Cowanshannock	DAYTON BOROUGH (Dayton Borough, Et Al #1 97A)	#1	
005 01101	Armstrong	Cowanshannock	H H HARKLE ROAD (Harkleroad, H. H. #1 151A)	#1	
005 20662	Armstrong	Cowanshannock	WILLIAM & GLADYS HARKLEROAD (Harkleroad, William R. #1 76A)	#1	

RECEIVED

DEC 26 2006

NOV 20 2006

DEP, SOUTHWEST REGION  
OIL & GASENVIRONMENTAL PROTECTION  
DEPARTMENT



Application for Transfer of Well Permit or Registration

<b>TRANSFER FROM</b>		<b>TRANSFER TO</b>	
Name	OGO#	Name	OGO#
T.W. PHILLIPS GAS AND OIL CO. 12913		T.W. PHILLIPS GAS SUPPLY CORP.	
<b>WELLS TO BE TRANSFERRED</b>			

DEP Permit/Reg # USE (Well API #)	County	Municipality	Farm Name	DEP Name (Co. Name)	Well No.	Proj/ Ser #
005 21888	Armstrong	Cowanshannock	R & P COAL	(Helvetia Coal Mining Co. #2 338A)		#2
005 20897	Armstrong	Cowanshannock	R & P COAL	(Helvetia Coal Mining Co. #3 338A)		#3
005 20161	Armstrong	Cowanshannock	R & P COAL	(Helvetia Coal Mining Co. #4 338A)		#4
005 20258	Armstrong	Cowanshannock	Rochester & Pgh Coal Co	(Helvetia Coal Mining Co. #6 338A)		#6
005 20342	Armstrong	Cowanshannock	R & P COAL	(Helvetia Coal Mining Co. #7 338A)		#7
005 21629	Armstrong	Cowanshannock	R & P COAL	(Helvetia Coal Mining Co. #1 786A)		#1
005 01104	Armstrong	Cowanshannock	HELVETIA COAL MINING	(Helvetia Coal Mining Co. #2 786A)		#2
005 01105	Armstrong	Cowanshannock	HELVETIA COAL MINING	(Helvetia Coal Mining Co. #3 786A)		#3
005 20884	Armstrong	Cowanshannock	R & P COAL	(Helvetia Coal Mining Co. #4 786A)		#4
005 20812	Armstrong	Cowanshannock	R & P COAL	(Helvetia Coal Mining Co. #6 786A)		#6
005 01184	Armstrong	Cowanshannock	ANNIE IRWIN (Irwin, Annie M. #1 58A)			#1
005 01128	Armstrong	Cowanshannock	H KIRKPATRICK (Kirkpatrick, H. D. #1 140A)			#1
005 01131	Armstrong	Cowanshannock	J MCCURDY (McCurdy, John #1 50A)			#1
005 20259	Armstrong	Cowanshannock	ANGELO MILICIO (McCurdy, John #2 50A)			#2
005 21092	Armstrong	Cowanshannock	RAYMOND & BETTY MCELWAIN (McElwain, Raymond R. #1 40A)			#1
005 21029	Armstrong	Cowanshannock	RALPH M MCMEANS (McMeans, R. A. #1 115A)			#1
005 01106	Armstrong	Cowanshannock	O O MEYER (Meyer, O. O. #1 102A)			#1
005 01110	Armstrong	Cowanshannock	C OHARROW (O'Harrow, C. I. #1 127A)			#1
005 20780	Armstrong	Cowanshannock	J R CURAN (Patterson, Neil #1 64A)			#1
005 20551	Armstrong	Cowanshannock	R & P COAL (R. & P. Coal Co. #1 98A)			#1
005 21714	Armstrong	Cowanshannock	R & P COAL (R. & P. Coal Co. #2 98A)			#2
005 20351	Armstrong	Cowanshannock	R & P COAL (R. & P. Coal Co. #1 216A)			#1
005 20295	Armstrong	Cowanshannock	R & P COAL (R. & P. Coal Co. #2 216A)			#2
005 20331	Armstrong	Cowanshannock	R & P COAL (R. & P. Coal Co. #3 216A)			#3
005 20344	Armstrong	Cowanshannock	EARL H & ANNA MAE SLEASE (Sleese, E. H. #1 135A)			#1
005 21116	Armstrong	Cowanshannock	ERNEST D & BETTY J SMITH (Smith, Ernest & Betty #1 100A)			#1
005 23065	Armstrong	Cowanshannock	MARGARET A UPLINGER (Uplinger, E. C. #2 50A)			#2
005 01173	Armstrong	Kiskiminitas	R M BURNS (Burns, R. M. #1 82A)			#1
005 01098	Armstrong	Kiskiminitas	R M BURNS (Burns, R. M. #2 82A)			#2
005 01099	Armstrong	Kittanning	HELVETIA COAL MINING	(Helvetia Coal Mining Co. #1 126A)		#1
005 01154	Armstrong	Kittanning	ELIZA MCCLUNE (McClune, Eliza #1 25A)			#1
005 01150	Armstrong	Kittanning	R B MECKLISH (Mecklish, R. B. #2 105A)			#2
005 01151	Armstrong	Kittanning	D MILLER (Miller, Daniel #1 84A)			#1
005 21045	Armstrong	Kittanning	G R & W R MCCOLLUM (Miller, W. G. #1 64A)			#1
005 01137	Armstrong	Kittanning	N H RUPP (Rupp, N. H. #1 40A)			#1
005 21541	Armstrong	Madison	VERN C DUNCAN (Beatty, H. V. #1 86A)			#1
005 21571	Armstrong	Madison	ELMER G AND GLADYS P WILLIAMS (Demarzi, Henry #1 82A)			#1
005 21593	Armstrong	Madison	ELMER G & GLADYS P WILLIAMS (Demarzi, Henry #2 82A)			#2
005 21569	Armstrong	Madison	ROY B AND EMMA JANE WINESBERG (Hawk, W. G. #1 15A)			#1
005 21332	Armstrong	Madison	VERN C & FLORA E DUNCAN (McGinnis, J. B. & J. L. #1 60A)			#1
005 20871	Armstrong	Madison	ELMER & GLADYS WILLIAMS (Miller, M. K. #2 55A)			#2

**DEP USE ONLY**  
Initial (DEP  
R.P.M. or other)

RECEIVED

DEC 26 2006

NOV 20 2006

DEP, SOUTHWEST REGION  
OIL & GAS

ENVIRONMENTAL PROTECTION  
NORTHWEST REGIONAL OFFICE



Application for Transfer of Well Permit or Registration

<b>TRANSFER FROM:</b>		<b>TRANSFER TO:</b>	
Name	OGOH#	Name	OGOH#
T.W. PHILLIPS GAS AND OIL CO. 12913		T.W. PHILLIPS GAS SUPPLY CORP.	

**WELLS TO BE TRANSFERRED**

DEP Permit/Reg # USE (Well API #)	County	Municipality	Farm Name	DEP Name (Co. Name)	Well No.	Proj/ Ser #
005 20971	Armstrong	Mahoning	HAROLD WHITE (Putney & Doverspike #3 172A)		#3	
005 21848	Armstrong	North Buffalo	T W P & BREDIN (T. W. P. & Bredin #2 448A)		#2	
005 00966	Armstrong	North Buffalo	T W P & BREDIN (T. W. P. & Bredin #5 448A)		#5	
005 00967	Armstrong	North Buffalo	T W P & BREDIN (T. W. P. & Bredin #6 448A)		#6	
005 00968	Armstrong	North Buffalo	T W P & BREDIN (T. W. P. & Bredin #7 448A)		#7	
005 20150	Armstrong	Plum Creek	H L & DOROTHY R EMERT (Dodge, J. M. #2 100A)		#2	
005 01186	Armstrong	Plum Creek	W E CESSNA (Cessna, W. E. #2 155A)		#2	
005 01190	Armstrong	Plum Creek	S C CRUSAN (Crusan, S. C. #1 100A)		#1	
005 20721	Armstrong	Plum Creek	OWEN & DONALD BOYER (Dunmire, J. H. #2 100A)		#2	
005 01178	Armstrong	Plum Creek	J H DUNMIRE (Dunmire, J. H. #4 100A)		#4	
005 01179	Armstrong	Plum Creek	R M EASTLICK (Eastlick, R. M. #1 60A)		#1	
005 01187	Armstrong	Plum Creek	ELBERTON STATE BANK (Elberton State Bank #1 124A)		#1	
005 21657	Armstrong	Plum Creek	MURRAY D ELGIN (Elgin, M. D. #2 70A)		#2	
005 20872	Armstrong	Plum Creek	GEORGE & VIRGINIA SCHALL (Graham, J. P. #2 140A)		#2	
005 01182	Armstrong	Plum Creek	GW HANKEY (Hankey, G. W. #2 75A)		#2	
005 21643	Armstrong	Plum Creek	R & P COAL (Helvetia Coal Mining Co. #1 216A)		#1	
005 01188	Armstrong	Plum Creek	HELVETIA COAL MINING (Helvetia Coal Mining Co. #2 216A)		#2	
005 01189	Armstrong	Plum Creek	HELVETIA COAL MINING (Helvetia Coal Mining Co. #3 216A)		#3	
005 20915	Armstrong	Plum Creek	MARLIN R CROWNOVER (McCausland, M. J. #1 35A)		#1	
005 20476	Armstrong	Plum Creek	MAGGIE MCINTIRE (McIntire, Maggie #1 68A)		#1	
005 20219	Armstrong	Plum Creek	WILLIAM J JOCHS (Ochs, W. J. #1 88A)		#1	
005 20324	Armstrong	Plum Creek	WILLIAM J JOCHS (Ochs, W. J. #2 88A)		#2	
005 01191	Armstrong	Plum Creek	L PETERMAN (Peterman, Lyle #1 38A)		#1	
005 20283	Armstrong	Plum Creek	S F PETERS (Peters, S. F. #1 102A)		#1	
005 20214	Armstrong	Plum Creek	W A SOWERS (Peters, S. F. #2 102A)		#2	
005 20215	Armstrong	Plum Creek	W A SOWERS (Peters, S. F. #3 102A)		#3	
005 20207	Armstrong	Plum Creek	GEORGIA E SOWERS (Peters, S. F. #4 102A)		#4	
005 01192	Armstrong	Plum Creek	P N REEFER (Reefer, P. N. #1 105A)		#1	
005 01193	Armstrong	Plum Creek	W E REEFER (Reefer, W. E. #1 136A)		#1	
005 21519	Armstrong	Plum Creek	FRED & DOROTHY MUSSER (Reefer, W. K. #1 93A)		#1	
005 21912	Armstrong	Plum Creek	C N SHAFFER (Shaffer, C. N. #1 85A)		#1	
005 20448	Armstrong	Plum Creek	KENNETH O SMAY (Smay, K. O. #2 104A)		#2	
005 20387	Armstrong	Plum Creek	JAMES C B STEWART (Stewart, J. C. B. #1 72A)		#1	
063 00088	Armstrong	Redbank	R L BARRETT (Barrett, R. L. #1 63A)		#1	
005 21565	Armstrong	Redbank	RICHARD D DONINE (Donine, Richard D. #1 70A)		#1	
005 01045	Armstrong	Redbank	IDA MCGREGOR (McGregor, Ida #1 100A)		#1	
005 20376	Armstrong	Redbank	IDA MCGREGOR (McGregor, Ida #2 100A)		#2	
005 20537	Armstrong	Redbank	BERT E & SADIE ORF (Orf, Adam L. #1 120A)		#1	
005 21946	Armstrong	Redbank	PAUL J & BARBARA K SHAFFER (Shick, Alvery C. #1 75A)		#1	
005 01030	Armstrong	South Buffalo	M R IRWIN (Irwin, Margaret R. #2 120A)		#2	
005 20564	Armstrong	South Buffalo	MARY A LEARD (Keener, J. W. #1 45A)		#1	

**DEP USE ONLY** Initial (DEP R.P.M. or other)

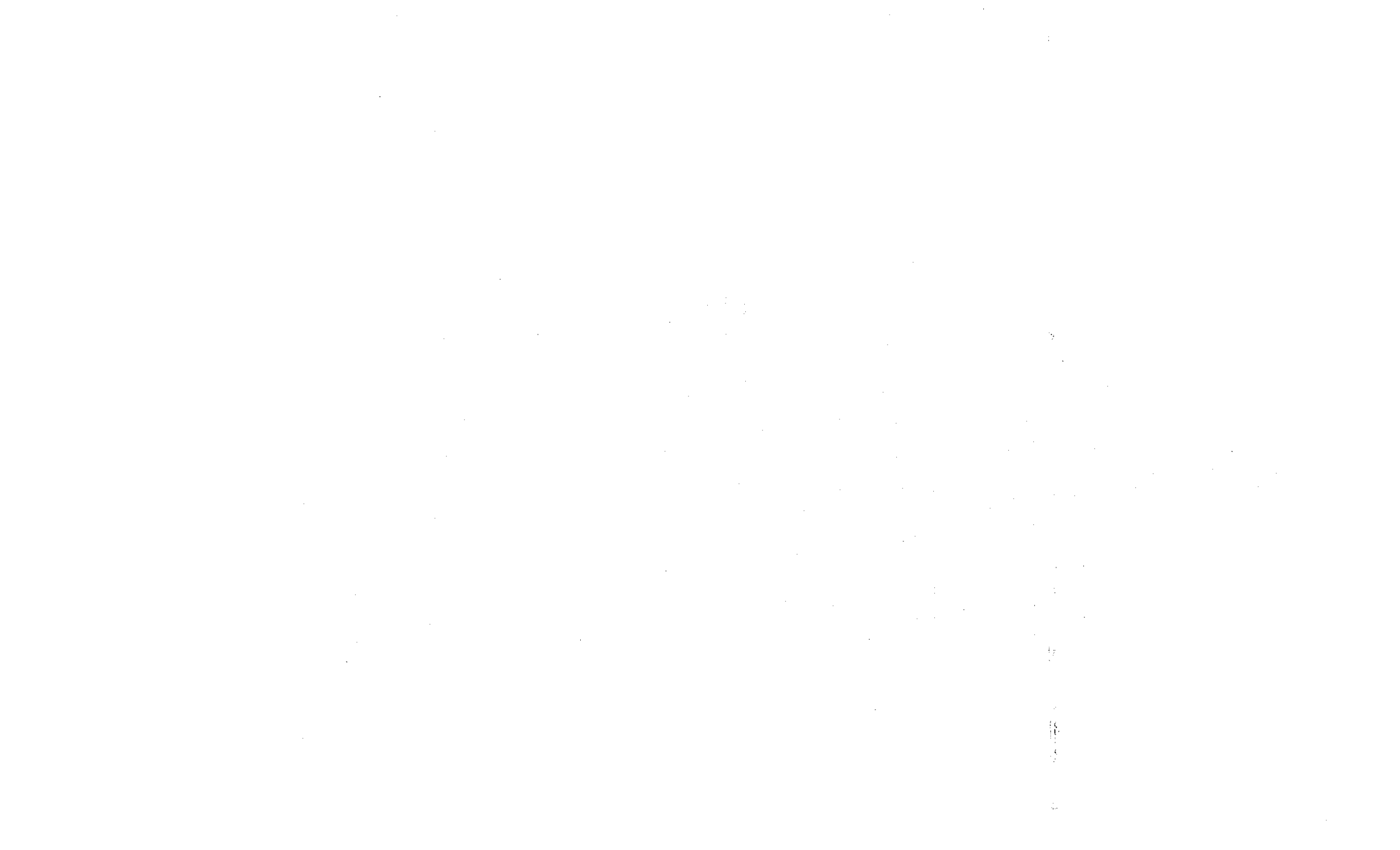
ENVIRONMENTAL PROTECTION  
NORTHWEST REGIONAL OFFICE

RECEIVED

DEC 26 2006

DEP, SOUTHWEST REGION  
OIL & GAS

NOV 20 2006



Application for Transfer of Well Permit or Registration

<b>TRANSFER FROM</b>		<b>TRANSFER TO</b>	
Name	OGOH#	Name	OGOH#
T.W. PHILLIPS GAS AND OIL CO. 12913		T.W. PHILLIPS GAS SUPPLY CORP.	
<b>WELLS TO BE TRANSFERRED</b>			

DEP Permit/Reg #	County	Municipality	Farm Name	DEP Name (Co. Name)	Well No.	Proj/ Ser #
005 20966	Armstrong	South Buffalo	ELMER E BAKER (Srader, A. C. #1 156A)		#1	
005 01033	Armstrong	South Buffalo	D K SRADER (Srader, D. K. #1 154A)		#1	
005 01034	Armstrong	South Buffalo	D K SRADER (Srader, D. K. #3 154A)		#3	
005 21465	Armstrong	Wayne	DAVID C BRICE (Brice, David #1 85A)		#1	
005 01120	Armstrong	Wayne	H A BRICE (Brice, H. A. #1 45A)		#1	
005 22388	Armstrong	Wayne	B F EVANS (Evans, George M. #2 109A)		#2	
005 21316	Armstrong	Wayne	B F EVANS (Evans, George M. #3 100A)		#3	
005 01112	Armstrong	Wayne	G L GOODHART (Goodhart, G. L. #1 56A)		#1	
005 01113	Armstrong	Wayne	G GOODHART (Goodhart, George Jr. #1 90A)		#1	
005 01122	Armstrong	Wayne	WM HARRIS (Harris, William #1 30A)		#1	
005 01047	Armstrong	Wayne	D D MARSHALL (Marshall, D. D. #1 106A)		#1	
005 01048	Armstrong	Wayne	M L MCINTIRE (McIntire, M. L. #1 69A)		#1	
005 01223	Armstrong	Wayne	S STEELE & CALHOUN (Sadie Steele & Calhoun #3 120A)		#3	
005 01115	Armstrong	Wayne	J R TROUP (Troup, J. R. #1 76A)		#1	
005 20522	Armstrong	Buffalo	Edward R. Kapitzky (Clark Coal & Coke Co. #1 165A)		#1	
019 00546	Butler	Buffalo	CLARK COAL & COKE CO (Clark Coal & Coke Co. #3 165A)		#3	
019 00522	Butler	Buffalo	MFALKNER 63A (Falkner, Matthew #1 63A)		#1	
019 20046	Butler	Buffalo	MFALKNER (Falkner, Matthew #2 63A)		#2	
019 20047	Butler	Buffalo	ANTHONY & MARGUERITE CRESTONI (Ralston, W. M. #1 63A)		#1	
019 20609	Butler	Clearfield	GRANT SHUSTER (Shuster, Grant #5 216A)		#5	
019 00544	Butler	Clearfield	BUTLER (Magee, W. S. #3 116A)		#3	
019 00543	Butler	Clearfield	M J SLOAN 51A (Sloan, & T. W. P. #5 51A)		#5	
019 00536	Butler	Summit	M J SLOAN 51A (Sloan, M. J. & T. W. Phillips #4 51A)		#4	
019 00537	Butler	Summit	S MCNELSON 355A (Nelson, Stephen #3 355A)		#3	
019 00539	Butler	Winfield	L RETTIG 73A (Rettig, Louis #3 73A)		#3	
033 00033	Clearfield	Bell	L BRICKER 2A (Bricker, L. U. #1 2A)		#1	
033 20353	Clearfield	Bell	M L BEATTY (Beatty, M. L. #1 125A)		#1	
033 20357	Clearfield	Bell	PAUL BOUCH (Bouch, Paul #1 53A)		#1	
033 20381	Clearfield	Bell	AARON P & J O CLARK JR H E CLARK INT (Clark, H. E., Est. Of #3 690A)		#3	
033 20440	Clearfield	Bell	EUGENE DAVIDSON (Davidson, George F. #1 133A)		#1	
033 20334	Clearfield	Bell	E EUGENE DAVIDSON (Davidson, George F. #2 133A)		#2	
033 20482	Clearfield	Bell	MRS DELMAR MILLER (Davidson, J. W. #2 60A)		#2	
033 20436	Clearfield	Bell	JOHN DUNBAR (Dunbar, John #1 35A)		#1	
033 20441	Clearfield	Bell	ETHEL M GASTON (Gaston, E. M., Exrx. #1 60A)		#1	
033 20897	Clearfield	Bell	ETHEL M GASTON (Gaston, E. M., Exrx. #2 60A)		#2	
033 20370	Clearfield	Bell	W C GOURLEY (Gourley & Miller #1 335A)		#1	
033 20403	Clearfield	Bell	JOHN K MAHAFFEY (McGee & Mahaffey #1 116A)		#1	
033 20829	Clearfield	Bell	ROGER K MCGEE (McGee, W. L. & R. K. #1 183A)		#1	
033 20836	Clearfield	Bell	JOSEPH F & DEANNA J MOGLE (McGee, W. L. & R. K. #2 183A)		#2	
033 20437	Clearfield	Bell	PAUL W & BARBARA S BEATTY (McGee, W. L. & R. K. #1 374A)		#1	
			ESTHER E MCGEE (McGee, W. L. & R. K. #4 374A)		#4	

DEP USE ONLY Initial (DEP R.P.M. or other) SCA 1/9/07

ENVIRONMENTAL PROTECTION DEPARTMENT

DEC 26 2006

DEP, SOUTHWEST REGION OIL & GAS

NOV 20 2006

RECEIVED



Application for Transfer of Well Permit or Registration

TRANSFER FROM		TRANSFER TO			
Name	OGO#	Name	OGO#		
T.W. PHILLIPS GAS AND OIL CO. 12913		T.W. PHILLIPS GAS SUPPLY CORP.			
<b>WELLS TO BE TRANSFERRED</b>					
DEP Permit/Reg # USE (Well API #)	County	Municipality	Farm Name DEP Name (Co. Name)	Well No. Ser #	Proj/ Ser #
033 20344	Clearfield	Bell	WARREN B MIKESSELL (Mikesell, W. B. #1 160A)	#1	
033 20389	Clearfield	Bell	ITHAMER EARL MOGLE (Mogel, I. E. #1 62A)	#1	
033 00034	Clearfield	Bell	MNICODEMUS (Nicodemus, Margaret #1 61A)	#1	
033 20375	Clearfield	Bell	JOHN WATSON REED (Reed, John W. #1 50A)	#1	
033 20754	Clearfield	Bell	A H REITZ (Reitz, J. S. #1 425A)	#1	
033 20360	Clearfield	Bell	A H REITZ FALY (Reitz, J. S. #2 425A)	#2	
033 20432	Clearfield	Bell	DAVID D STEPHENS (Stephens, David D. #1 69A)	#1	
033 20481	Clearfield	Bell	DAVID M WEBSTER (Webster, David M., Agt #1 40A)	#1	
033 20466	Clearfield	Bell	W J WENSEL (Wensel & Allison #1 4A)	#1	
033 00036	Clearfield	Burnside	J GALLAGHER (Gallagher, J. M. #1 587A)	#1	
033 20491	Clearfield	Penn	VIOLET E PETERSON (Peterson, Violet #1 20A)	#1	
033 20489	Clearfield	Penn	JEANINE THOMAS (Thomas, Jeanine #1 106A)	#1	
063 22195	Indiana	Armstrong	GLENN W & RUTH E CARNAHAN (Carnahan, G. W. & R. #1 35A)	#1	
063 21628	Indiana	Armstrong	TAYLOR CARNAHAN (Carnahan, Taylor #1 56A)	#1	
063 21402	Indiana	Armstrong	FRANK T CUSTER (Custer, Frank T. #1 106A)	#1	
063 22674	Indiana	Armstrong	ARTHUR R & MARY J FLEMING (Fleming, A. R. & M. J. #1 104A)	#1	
063 20310	Indiana	Armstrong	KENNETH C & PATRICIA A DREW (George, Robert G. #1 166A)	#1	
063 21334	Indiana	Armstrong	JOHN A GEORGE (George, Robert G. #2 166A)	#2	
063 20357	Indiana	Armstrong	JOHN & MABEL G HENRY (Henry, John & Mabel G. #1 106A)	#1	
063 22656	Indiana	Armstrong	JOHN & MABEL G HENRY (Henry, John & Mabel G. #2 106A)	#2	
063 21408	Indiana	Armstrong	RONALD A JOHNSTON (Johnston, Ronald A. #1 153A)	#1	
063 21409	Indiana	Armstrong	RONALD A JOHNSTON (Johnston, Ronald A. #2 153A)	#2	
063 21410	Indiana	Armstrong	H C KLINE (Kline, H. C. #1 126A)	#1	
063 21626	Indiana	Armstrong	H C KLINE (Kline, H. C. #2 126A)	#2	
063 20939	Indiana	Armstrong	CHARLES LASSICK & GRACE BEERS (Lassick & Beers #1 63A)	#1	
063 20069	Indiana	Armstrong	VICTOR MARTINI (Martini, Victor #3 120A)	#3	
063 21413	Indiana	Armstrong	MCKEE & BOYER (McKee & Boyer #1 40A)	#1	
063 20913	Indiana	Armstrong	PAUL MICHAEL (Michael, Paul, Jr. #1 100A)	#1	
063 20144	Indiana	Armstrong	JOHN F PETERMAN (Peterman, J. F. #1 69A)	#1	
063 22084	Indiana	Armstrong	JOHN F PETERMAN (Peterman, J. F. #2 69A)	#2	
063 22756	Indiana	Armstrong	MARY M & FLORENCE M STEWART (Stewart, G. L. #1 103A)	#1	
063 00165	Indiana	Armstrong	G UNCAPHER (Uncapher, George W. #1 147A)	#1	
063 20029	Indiana	Armstrong	R & P COAL (Uncapher, George W. #5 147A)	#5	
063 20076	Indiana	Armstrong	GEORGE W UNCAPHER (Uncapher, George W. #7 147A)	#7	
063 20150	Indiana	Armstrong	R S UNCAPHER (Uncapher, R. S. #1 108A)	#1	
063 22085	Indiana	Armstrong	GRACE E UNCAPHER (Uncapher, R. S. #2 108A)	#2	
063 20265	Indiana	Armstrong	ORVILLE M WATSON (Watson, O. M. #2 136A)	#2	
063 20008	Indiana	Armstrong	CHARLES P WEBER (Weber, C. P. #1 108A)	#1	
063 21335	Indiana	Armstrong	CHARLES P & ROBERTA G WEBER (Weber, C. P. & R. G. #2 108A)	#2	
063 22083	Indiana	Armstrong	CHARLES P & ROBERTA G WEBER (Weber, C. P. & R. G. #3 108A)	#3	
063 21566	Indiana	Banks	MINNIE O BAIRD (Baird, M. O. (Et. Al.) #1 150A)	#1	

DEP USE ONLY

Initial (DEP  
R.P.M. or other)

RECEIVED

DEC 26 2006

NOV 20 2006  
DEP, SOUTHWEST REGION  
OIL & GAS

ENVIRONMENTAL PROTECTION

1  
2  
3  
4  
5  
6  
7  
8  
9  
10  
11  
12  
13  
14  
15  
16  
17  
18  
19  
20  
21  
22  
23  
24  
25  
26  
27  
28  
29  
30  
31  
32  
33  
34  
35  
36  
37  
38  
39  
40  
41  
42  
43  
44  
45  
46  
47  
48  
49  
50  
51  
52  
53  
54  
55  
56  
57  
58  
59  
60  
61  
62  
63  
64  
65  
66  
67  
68  
69  
70  
71  
72  
73  
74  
75  
76  
77  
78  
79  
80  
81  
82  
83  
84  
85  
86  
87  
88  
89  
90  
91  
92  
93  
94  
95  
96  
97  
98  
99  
100

## Application for Transfer of Well Permit or Registration

TRANSFER FROM		TRANSFER TO			
Name	OGO#	Name	OGO#		
T.W. PHILLIPS GAS AND OIL CO. 12913		T.W. PHILLIPS GAS SUPPLY CORP.			
<b>WELLS TO BE TRANSFERRED</b>					
DEP Permit/Reg # USE (Well API #)	County	Municipality	Farm Name DEP Name (Co. Name)	Well No. Ser #	Proj/ Ser #
063 00348	Indiana	Banks	HE CLARK (Clark, H. E. Est. #1 78A)	#1	#1
063 00349	Indiana	Banks	HE CLARK (Clark, H. E. Est. #1 151A)	#1	#1
063 26271	Indiana	Banks	Aaron P Clark & J O Clark Jr (Clark, W.P. #1 312A)	#1	#1
063 24320	Indiana	Banks	FARMERS & MINERS TRUST (Farmers & Miners Trust Co. #1 250A)	#1	#1
063 21367	Indiana	Banks	CLARK B MCLAUGHLIN (McLaughlin, Clark B. #2 180A)	#2	#2
063 21326	Indiana	Banks	CLARK B MCLAUGHLIN (McLaughlin, Clark B. #3 180A)	#3	#3
063 22312	Indiana	Banks	CHARLES A & MARGARET B SPRITZ (Spritz, C. A. & M. D. #1 19A)	#1	#1
063 00151	Indiana	Blacklick	S ADAMCHICK (Adamchik, Steve #2 137A)	#2	#2
063 00152	Indiana	Blacklick	J ARCHIBALD (Archibald, J. A. #1 300A)	#1	#1
063 20211	Indiana	Blacklick	CARL W BAILEY (Bailey, C. W. & U.S.A. #1 124A)	#1	#1
063 20196	Indiana	Blacklick	DANIEL C BEERS (Beers, D.C. #1 54A)	#1	#1
063 20839	Indiana	Blacklick	J VINCENT CAMPBELL (Campbell, J. Vincent #1 154A)	#1	#1
063 20193	Indiana	Blacklick	R MEWING & BOYD CLAWSON (Clawson & Ewing #1 203A)	#1	#1
063 20843	Indiana	Blacklick	BOYD CLAWSON (Clawson, Boyd #1 150A)	#1	#1
063 20840	Indiana	Blacklick	BOYD CLAWSON (Clawson, Boyd #2 150A)	#2	#2
063 22644	Indiana	Blacklick	HOMER E & ANNA MAY CLAWSON (Clawson, H. E. & A. M. #1 72A)	#1	#1
063 22704	Indiana	Blacklick	J PAUL & MARY M COCHRAN (Cochran, J. P. & M. M. #1 72A)	#1	#1
063 22753	Indiana	Blacklick	GEORGE A FAILS (Fails, George, Jr. #1 55A)	#1	#1
063 20189	Indiana	Blacklick	JAMES E HILL (Hill, J. E. #1 244A)	#1	#1
063 20228	Indiana	Blacklick	GEORGE S HOWARD (Howard, G. S. #1 138A)	#1	#1
063 22660	Indiana	Blacklick	J C MCINTIRE (McIntire, J. C. #2 276A)	#2	#2
063 20169	Indiana	Blacklick	HARRY F PERSHING (Pershing, H. F. #1 105A)	#1	#1
063 22072	Indiana	Blacklick	WM W PLATT (Platt, Wm. W. (Et Al.) #1 150A)	#1	#1
063 20183	Indiana	Blacklick	S STEWART ROBINSON (Robinson Brothers #1 116A)	#1	#1
063 21328	Indiana	Blacklick	GEORGE & EDNA RUSSELL (Russell, George & Edna #1 101A)	#1	#1
063 20230	Indiana	Blacklick	RALPH W SHAFFOR (Shaffer, R. W. #1 148A)	#1	#1
063 20248	Indiana	Blacklick	RALPH W SHAFFOR (Shaffer, R. W. #2 148A)	#2	#2
063 20336	Indiana	Blacklick	WLEROY SMITH AND T R & DL CLAWSON (Smith & Clawson #1 105A)	#1	#1
063 22693	Indiana	Blacklick	LLOYD G & MILDRED E TAYLOR (Taylor, L. G. & M. E. #1 60A)	#1	#1
063 20383	Indiana	Blacklick	ALBERT J THOMPSON (Thompson, Albert J. #1 99A)	#1	#1
063 20655	Indiana	Blacklick	USA (U. S. A. #1 100A)	#1	#1
063 20418	Indiana	Blacklick	TREASURER OF USA (U. S. A. #1 134A)	#1	#1
063 20427	Indiana	Blacklick	TREASURER OF USA (U. S. A. 190A #1 190A)	#1	#1
063 00149	Indiana	Blacklick	USA (U. S. A. 616A #1 616A)	#1	#1
063 21323	Indiana	Blacklick	USA AND BEERS (U.S.A. & Beers #1 56A)	#1	#1
063 20178	Indiana	Blacklick	H P WILLIAMS (U.S.A. & Williams, H. P. #2 336A)	#2	#2
063 21329	Indiana	Blacklick	H P WILLIAMS (Williams, H. P. #3 336A)	#3	#3
063 20239	Indiana	Blacklick	T F WILLIAMS (Williams, T. F. #1 176A)	#1	#1
063 00351	Indiana	Brush Valley	GEN COAL CO (General Coal Co. #3 795A)	#3	#3
063 20688	Indiana	Brush Valley	ALAN HOLSINGER (Holsinger, Alan #1 109A)	#1	#1
063 00356	Indiana	Brush Valley	J T JACKSON (Jackson, J. T. #2 919A)	#2	#2

Page 6 of 29

DEP USE ONLY	Initial (DEP R.P.M. or other)
--------------	----------------------------------

RECEIVED

DEC 26 2006

NOV 20 2006

DEP. SOUTHWEST REGION  
OIL & GAS

ENVIRONMENTAL PROTECTION



Application for Transfer of Well Permit or Registration

<b>TRANSFER FROM</b>		<b>TRANSFER TO</b>	
Name	OGO#	Name	OGO#
T.W. PHILLIPS GAS AND OIL CO. 12913		T.W. PHILLIPS GAS SUPPLY CORP.	
<b>WELLS TO BE TRANSFERRED</b>			

DEP Permit/Reg #

USE (Well API#)	County	Municipality	Farm Name	DEP Name (Co. Name)	Well No.	Prof/ Ser #
063 00357	Indiana	Brush Valley	JT JACKSON	(Jackson, J. T. #3 919A)	#3	#3
063 20128	Indiana	Brush Valley	NELL H EDMONDSON	(Jackson, J. T. #4 919A)	#4	#4
063 20135	Indiana	Brush Valley	NELL H EDMONDSON	(Jackson, J. T. #5 919A)	#5	#5
063 21486	Indiana	Brush Valley	WILLIAM C LEASURE	(Leasure, William C. #1 134A)	#1	#1
063 00353	Indiana	Brush Valley	M J OVERDORFF	(Overdorff, M. J. & S. Q. #1 237A)	#1	#1
063 00358	Indiana	Brush Valley	T.W.P.G & C. PHILLIPS	(Phillips, T. W. & C. #1 86A)	#1	#1
063 00359	Indiana	Brush Valley	J H STEWART	(Stewart, J. Harry #1 212A)	#1	#1
063 00360	Indiana	Brush Valley	J H STEWART	(Stewart, J. Harry #2 212A)	#2	#2
063 20479	Indiana	Brush Valley	L C S COLLIERY	(Waschok, John #2 208A)	#2	#2
063 00378	Indiana	Buffington	R F CONRAD	(Conrad, R. F. #1 100A)	#1	#1
063 00374	Indiana	Buffington	J CRESPO	(Crespo, Jamie #1 109A)	#1	#1
063 00364	Indiana	Buffington	J DUTKO	(Dutko, John #1 102A)	#1	#1
063 21580	Indiana	Buffington	ALVIN S MACNEIL	(Macneil, Alvin S. #1 70A)	#1	#1
063 00376	Indiana	Buffington	H MEAGHER	(Meager, Hazel #1 270A)	#1	#1
063 20567	Indiana	Burrell	AMERICAN TRUSTEE & TRANSFER CORP	(A. T. & T. Corp. #1 149A)	#1	#1
063 26826	Indiana	Burrell	CAMPBELL & DEAN	(Campbell & Dean #1 165A)	#1	#1
063 00146	Indiana	Burrell	A M DUNLAP	(Dunlap, A. M. #1 150A)	#1	#1
063 00147	Indiana	Burrell	MINNIE FAY	(Fay, Mrs. Minnie #1 100A)	#1	#1
063 20218	Indiana	Burrell	THOMAS & LOUISE FRIEL	(Fay, Mrs. Minnie #2 100A)	#2	#2
063 21141	Indiana	Burrell	PAUL C & CHRISTINE JELLISON	(Jellison, Paul C. #1 17A)	#1	#1
063 21297	Indiana	Burrell	KARL G & MERLE C RAMSDEN	(Ramsden, K. G. & M. C. #1 11A)	#1	#1
063 20611	Indiana	Burrell	W STEELE SHAW	(Shaw, W. Steele #2 572A)	#2	#2
063 00148	Indiana	Burrell	J I SHEARER	(Shearer, James I. #1 100A)	#1	#1
063 20180	Indiana	Burrell	JAMES IRWIN SHEARER	(Shearer, James I. #2 100A)	#2	#2
063 20221	Indiana	Burrell	U S A FMLY ROBERT C L SHUMAKER	(Shumaker, R. C. L. #1 135A)	#1	#1
063 20480	Indiana	Burrell	ALEX & PAULINE TAMSUJA	(Tamsula, Alex & Pauline #1 123A)	#1	#1
063 21610	Indiana	Canoe	CLARA E RUGH	(Barnett, Joseph R. #2 150A)	#2	#2
063 22353	Indiana	Canoe	CLARA E RUGH	(Barnett, Joseph R. #3 150A)	#3	#3
063 24767	Indiana	Canoe	JOSEPH C & EMOGENE DEFELICE	(Carey, Joseph & Young #1 100A)	#1	#1
063 21711	Indiana	Canoe	FRANK & FLORENCE YOUNG	(Carey, Joseph, & Young #2 100A)	#2	#2
063 23464	Indiana	Canoe	EUGENE W & JOANN O WHITE	(Casaday, H. C. #1 80A)	#1	#1
063 21677	Indiana	Canoe	EUGENE CATALANO	(Catalano, Eugene #1 30A)	#1	#1
063 00306	Indiana	Canoe	JAMES DOUGLAS	(Douglas, James #1 50A)	#1	#1
063 21568	Indiana	Canoe	ANGUS J & ELSIE E YOUNG	(Dunmire, C. B. #1 34A)	#1	#1
063 21828	Indiana	Canoe	JAMES W GEORGE	(George, John #1 108A)	#1	#1
063 22308	Indiana	Canoe	EUGENE W WHITE	(Graf, Edith #2 165A)	#2	#2
063 24851	Indiana	Canoe	MARIE A EMANUEL	(Hurd, Ella M. #1 300A)	#1	#1
063 22266	Indiana	Canoe	KISH & POHTS	(Kish & Pohts #1 106A)	#1	#1
063 22294	Indiana	Canoe	KISH & POHTS	(Kish & Pohts #2 106A)	#2	#2
063 22295	Indiana	Canoe	KISH & POHTS	(Kish & Pohts #3 106A)	#3	#3
063 22978	Indiana	Canoe	BARBARA Y HARKINS	(Nicola, F. #1 200A)	#1	#1

RECEIVED

DEC 26 2006

ENVIRONMENTAL PROTECTION  
NORTHWEST REGIONAL OFFICE  
OIL & GAS  
DEP, SOUTHWEST REGION

NOV 20 2006

DEP USE ONLY	Initial (DEP R.P.M. or other)
--------------	-------------------------------



Application for Transfer of Well Permit or Registration

<b>TRANSFER FROM</b>		<b>TRANSFER TO</b>	
Name	OGO#	Name	OGO#
T.W. PHILLIPS GAS AND OIL CO. 12913		T.W. PHILLIPS GAS SUPPLY CORP.	
<b>WELLS TO BE TRANSFERRED</b>			

DEP Permit/Reg # USE (Well API#)	County	Municipality	Farm Name	DEP Name (Co. Name)	Well No.	Proj/ Ser #
063 23149	Indiana	Canoe	D WILLIAM & MARGARET B	OVERLIN (Oberlin, Luella M. #1 145A)	#1	
063 24385	Indiana	Canoe	D WILLIAM & MARGARET B	OVERLIN (Oberlin, Luella M. #2 145A)	#2	
063 21102	Indiana	Canoe	D WILLIAM & MARGARET B	OVERLIN (Oberlin, Luella M. #3 145A)	#3	
063 22611	Indiana	Canoe	D WILLIAM & MARGARET B	OVERLIN (Oberlin, Luella M. #1 824A)	#1	
063 00303	Indiana	Canoe	LOBERLIN	(Oberlin, Luella M. #2 824A)	#2	
063 22610	Indiana	Canoe	D & MARGARET OBERLIN	(Oberlin, Luella M. #3 824A)	#3	
063 20396	Indiana	Canoe	LUELLA M OBERLIN	(Oberlin, Luella M. #6 824A)	#6	
063 22305	Indiana	Canoe	D WILLIAM & MARGARET B	OVERLIN (Oberlin, Luella M. #7 824A)	#7	
063 22307	Indiana	Canoe	D WILLIAM & MARGARET B	OVERLIN (Oberlin, Luella M. #8 824A)	#8	
065 20677	Indiana	Canoe	VIRGINIA L PEARCE	(Pearce, Virginia #1 90A)	#1	
065 20742	Indiana	Canoe	VIRGINIA L PEARCE	(Pearce, Virginia #2 90A)	#2	
063 21376	Indiana	Canoe	VIRGINIA L PEARCE	(Pearce, Virginia #3 90A)	#3	
063 21379	Indiana	Canoe	VIRGINIA L PEARCE	(Pearce, Virginia #4 90A)	#4	
063 22954	Indiana	Canoe	IRBA RISHELL STATES	(Rishell, Emma #1 106A)	#1	
063 23110	Indiana	Canoe	MARY L SCOTT	(Scott, M. L. #1 50A)	#1	
063 21899	Indiana	Canoe	LESTER L & BETH L LOVELETT	(Shery & Rupert #1 112A)	#1	
063 22285	Indiana	Canoe	LESTER & BETH LOVELETT	(Shery & Rupert #2 112A)	#2	
063 00363	Indiana	Canoe	SNYDER (Snyder)	(Wingert) #2 90A)	#2	
063 21509	Indiana	Canoe	KARL G KIM	(Snyder Heirs #1 10A)	#1	
063 23435	Indiana	Canoe	G R HAWK	(States, J.T., T.W. & Adam #1 36A)	#1	
063 23830	Indiana	Canoe	WAYNE & VERA STITELER	(States, Leroy #1 38A)	#1	
063 21804	Indiana	Canoe	ORPHA M STOOPS	(Stoops, C. M. #1 75A)	#1	
063 22286	Indiana	Canoe	ORPHA STOOPS	(Stoops, C. M. #2 75A)	#2	
063 23422	Indiana	Canoe	DANIEL LAIRD & HELEN E TYGER	(Tyger, A. M. #2 255A)	#2	
063 00302	Indiana	Canoe	J H WEAVER	(Weaver, J. H. #2 800A)	#2	
063 22530	Indiana	Canoe	LOUIS E TYGER	(Work, S. C. (Et Al.) #1 120A)	#1	
063 20194	Indiana	Center	J B ADAMS	(Adam, J. B. #1 110A)	#1	
063 21584	Indiana	Center	COAL MINING CO OF GRACETON	(American T. & T. Cop. #1 300A)	#1	
063 21620	Indiana	Center	GEORGE J ANGELO	(Angelo, George J. #1 38A)	#1	
063 21619	Indiana	Center	SALVATORE C JR & FRANCES CHIMINO	(Chimino, S. C. & Francis #1 47	#1	
063 23442	Indiana	Center	JOSEPH J & FRANCES M SIMEONE	(Gdovictin, George #1 208A)	#1	
063 21333	Indiana	Center	JOHN A GEORGE	(George, John A. #1 74A)	#1	
063 23006	Indiana	Center	WMR GEORGE	(George, Wm. R. #1 131A)	#1	
063 20783	Indiana	Center	FRED A & DOROTHY A MUSSER	(Musser, F. A. & D. A. #1 50A)	#1	
063 20330	Indiana	Center	R & P COAL	(R. & P. Coal Co. #3 1144A)	#3	
063 22591	Indiana	Center	T W PHILLIPS GAS & OIL	(T. W. P. & Fabin #1 143A)	#1	
063 22701	Indiana	Center	T W PHILLIPS GAS & OIL	(T. W. P., & Fabin #3 143A)	#3	
063 20190	Indiana	Center	GEORGE K WADDELL	(Waddel, G. K. #1 128A)	#1	
063 20838	Indiana	Center	WILLIAM C WIDDOWSON	(Widdowson, W. C. #1 250A)	#1	
063 00133	Indiana	Conemaugh	ADAIR & SHEARER	(Adair & Shearer #1 90A)	#1	
063 22932	Indiana	Conemaugh	ATLAS POWDER CO	(Atlas Powder Co. #1 331A)	#1	

Page 8 of 29

DEP USE ONLY Initial (DEP R.P.M. or other) SCS 1/8/07

RECEIVED

DEC 26 2006

NOV 20 2006

DEF. SOUTHWEST REGION  
OIL & GAS

ENVIRONMENTAL PROTECTION  
NORTHWEST REGION



Application for Transfer of Well Permit or Registration

<b>TRANSFER FROM</b>		<b>TRANSFER TO</b>	
Name	OGO#	Name	OGO#
T.W. PHILLIPS GAS AND OIL CO. 12913		T.W. PHILLIPS GAS SUPPLY CORP.	

**WELLS TO BE TRANSFERRED**

DEP Permit/Reg # USE (Well API #)	County	Municipality	Farm Name	DEP Name (Co. Name)	Well No.	Proj/ Ser #
063 20630	Indiana	Conemaugh	WILBUR L BEATTY (Beatty, Wilbur L. #1 71A)		#1	
063 22601	Indiana	Conemaugh	ROBERT & ELIZABETH BIEDA (Bieda, Rob T. & Eliz. #1 100A)		#1	
063 24953	Indiana	Conemaugh	ROY N & ALICE D CLAWSON (Bowman, Homer #1 175A)		#1	
063 00137	Indiana	Conemaugh	M CARNAHAN (Carnahan, Minnie #1 70A)		#1	
063 20177	Indiana	Conemaugh	WILLIAM CHESNICK (Chesnick, William #1 104A)		#1	
063 21778	Indiana	Conemaugh	CLAIR L DUNCAN (Duncan, L. J. #1 447A)		#1	
063 21187	Indiana	Conemaugh	HOMER A & PEARL A CONRAD (Conrad, H. A. #1 101A)		#1	
063 22604	Indiana	Conemaugh	GEORGE N & ALMA V ROSE (Deemer, O. R. #1 35A)		#1	
063 22480	Indiana	Conemaugh	JOSEPH N DRUMMOND (Drummond, Joseph N. #1 12A)		#1	
063 00153	Indiana	Conemaugh	L J DUNCAN (Duncan, L. J. #1 106A)		#1	
063 21639	Indiana	Conemaugh	DALE & PATRICIA DUNLAP (Dunlap, Dale & Patricia #1 75A)		#1	
063 20536	Indiana	Conemaugh	JOE EGRY (Egry, Joe #1 36A)		#1	
063 21644	Indiana	Conemaugh	WILLIAM G & CARLA L EICHMAN (Eichtman, Wm. G. & Clara L. #1 120A)		#1	
063 00138	Indiana	Conemaugh	P ELWOOD (Elwood, Paul #1 120A)		#1	
063 00160	Indiana	Conemaugh	EWING & MCCUNN (Ewing & McCunn #1 108A)		#1	
063 00163	Indiana	Conemaugh	EWING & ZERFOSS (Ewing & Zerfoss #1 103A)		#1	
063 20089	Indiana	Conemaugh	P EWING & M ZERFOSS (Ewing & Zerfoss #2 103A)		#2	
063 00162	Indiana	Conemaugh	P N EWING (Ewing, P. N. #1 70A)		#1	
063 00136	Indiana	Conemaugh	FEDERAL LAB (Federal Laboratories #1 168A)		#1	
063 21682	Indiana	Conemaugh	L M GALINAC (Galinnac, L. M. #1 50A)		#1	
063 20306	Indiana	Conemaugh	HERSCHEL V SILBERSTEIN (Goldsmith, E. S. #3 128A)		#3	
063 00123	Indiana	Conemaugh	W P GRAFF (Graff, W. P. #1 111A)		#1	
063 00124	Indiana	Conemaugh	W P GRAFF (Graff, W. P. #1 136A)		#1	
063 23791	Indiana	Conemaugh	CHARLES & MIKE GRESKO (Gresko, J. M. #1 140A)		#1	
063 23846	Indiana	Conemaugh	HORST & ROSEMARIE KUNIG (Gulther, Clifford #1 152A)		#1	
063 00115	Indiana	Conemaugh	T M GUIHER (Gulther, Thomas M. #1 87A)		#1	
063 20287	Indiana	Conemaugh	ANNA HEAGY MICHAEL (Hobaugh, Anna M. #1 130A)		#1	
063 00141	Indiana	Conemaugh	A M HOBAUGH (Hobaugh, Anna M. #2 130A)		#2	
063 22608	Indiana	Conemaugh	PAUL T MEYERS (Jones, Sarah #1 92A)		#1	
063 00117	Indiana	Conemaugh	G C KELLY (Kelly, G. C. #1 80A)		#1	
063 23007	Indiana	Conemaugh	KENNEDY AND PETERSON (Kennedy & Peterson #1 153A)		#1	
063 23691	Indiana	Conemaugh	KENNEDY AND PETERSON (Kennedy & Peterson #2 153A)		#2	
063 24343	Indiana	Conemaugh	KENNEDY & PETERSON (Kennedy & Peterson #3 153A)		#3	
063 23829	Indiana	Conemaugh	KENNEDY & PETERSON (Kennedy & Peterson #4 153A)		#4	
063 24901	Indiana	Conemaugh	KENNEDY & PETERSON (Kennedy & Peterson #5 153A)		#5	
063 20054	Indiana	Conemaugh	GEORGE M KINER (Kiner, G. M. #1 165A)		#1	
063 22687	Indiana	Conemaugh	PATRICK J DIESARE FMYL WM T KINNAN (Kinnan, William T. #1 146A)		#1	
063 20132	Indiana	Conemaugh	WM T KINNAN (Kinnan, William T. #2 146A)		#2	
063 22755	Indiana	Conemaugh	ELMER C JR & HELEN B HILL FMYL KLINE (Kline, C. F. #1 175A)		#1	
063 22602	Indiana	Conemaugh	ELMER C & HELEN B HILL (Kline, Charles F. #2 175A)		#2	
063 00129	Indiana	Conemaugh	G J KLINGENSMITH (Klingensmith, G. J. #1 96A)		#1	

DEP USE ONLY	Initial (DEP)
	R.P.M. or other

RECEIVED  
DEC 26 2006  
ENVIRONMENTAL PROTECTION  
NORTHWEST REGION

NOV 20 2006  
DEP, SOUTHWEST REGION  
OIL & GAS



Application for Transfer of Well Permit or Registration

<b>TRANSFER FROM</b>		<b>TRANSFER TO</b>	
Name	OGO#	Name	OGO#
T.W. PHILLIPS GAS AND OIL CO. 12913		T.W. PHILLIPS GAS SUPPLY CORP.	

**WELLS TO BE TRANSFERRED**

DEP Permit/Reg # USE (Well API#)	County	Municipality	Farm Name	DEP Name (Co. Name)	Well No.	Proj/ Ser #
063 20924	Indiana	Conemaugh	EVA BOYER & WM D ROGERS	(Labelle & Rodgers #1 63A)	#1	#1
063 20205	Indiana	Conemaugh	STEVE J PAVLUK JR AND RUTH M LOWMAN	(Lowman & Pavlik #1 117A)	#1	#1
063 22595	Indiana	Conemaugh	EWART A & ETHEL M LYNCH	(Lynch, Ewart A. & Ethel #1 42A)	#1	#1
063 20237	Indiana	Conemaugh	LAURA E & MAREE E LYONS	(Lyons, L. E. #1 81A)	#1	#1
063 20680	Indiana	Conemaugh	LAURA E & MAREE E LYONS	(Lyons, L.E. & M. E. #1 11A)	#1	#1
063 00161	Indiana	Conemaugh	MACK & BAPPOR	(McKeever #2 445A)	#2	#2
063 20974	Indiana	Conemaugh	W THOMAS MALCOLM	(Malcolm, W. T. #1 21A)	#1	#1
063 00118	Indiana	Conemaugh	C M MARSHALL	(Marshall, C. M. #1 140A)	#1	#1
063 00111	Indiana	Conemaugh	C M MARSHALL	(Marshall, C. M. #2 142A)	#2	#2
063 00121	Indiana	Conemaugh	W S MCKEEVER	(McKeever, W.S. #1 44A)	#1	#1
063 23078	Indiana	Conemaugh	W A MCCREERY	(McCreery, W. A. #1 107A)	#1	#1
063 21634	Indiana	Conemaugh	AGNES W SMITH	(McGinley, William B. #4 300A)	#4	#4
063 20718	Indiana	Conemaugh	MCIWAIN & FORGY	(McIlwain & Forgy #1 114A)	#1	#1
063 22077	Indiana	Conemaugh	JOHN R MCQUAIDE	(McQuaide, John R. #1 71A)	#1	#1
063 20621	Indiana	Conemaugh	MUSSER FORESTS	(Musser Forest Inc. #1 131A)	#1	#1
063 23423	Indiana	Conemaugh	TREAS OF US (TRACT A-14)	(Nesbitt, Nathaniel #1 200A)	#1	#1
063 23544	Indiana	Conemaugh	TREASURER OF U.S. (TR A-16)	(Ortz & Held #1 50A)	#1	#1
063 20247	Indiana	Conemaugh	J H PISTINIZI	(Pistinizi, J. H. #1 100A)	#1	#1
063 22938	Indiana	Conemaugh	RAMSEY & PETERSON	(Ramsey & Peterson #1 20A)	#1	#1
063 20280	Indiana	Conemaugh	RALPH D REEGER	(Reeger, R. D. #1 152A)	#1	#1
063 00119	Indiana	Conemaugh	T H RISHEL	(Rishel, T. H. #1 170A)	#1	#1
063 20217	Indiana	Conemaugh	L D SHAWFIELD	(Shawfield & Fink #1 29A)	#1	#1
063 00113	Indiana	Conemaugh	J M SHAWLEY	(Shawley, J. M. #1 101A)	#1	#1
063 00125	Indiana	Conemaugh	J SHEARER	(Shearer, James #1 63A)	#1	#1
063 20191	Indiana	Conemaugh	J M SHIELDS	(Shields, J. M. & U. S. A. #1 107A)	#1	#1
063 20716	Indiana	Conemaugh	CARL M SHIRLEY	(Shirley, C. M. #1 24A)	#1	#1
063 00131	Indiana	Conemaugh	E G SHIRLEY	(Shirley, E. G. #1 106A)	#1	#1
063 00132	Indiana	Conemaugh	W G SHIRLEY	(Shirley, Willis #1 239A)	#1	#1
063 20145	Indiana	Conemaugh	I M SPEEDY	(Speedy, I. M. #1 110A)	#1	#1
063 20486	Indiana	Conemaugh	JACOB R STEAR	(Stear, Jacob R. #1 73A)	#1	#1
063 00142	Indiana	Conemaugh	MR THOMAS	(Thomas, M.R. #1 236A)	#1	#1
063 00145	Indiana	Conemaugh	W G TREECE	(Treece, W. G. #1 94A)	#1	#1
063 22666	Indiana	Conemaugh	TUNNELTON MINING	(Tunnelton Mining Co. #1 138A)	#1	#1
063 00127	Indiana	Conemaugh	M K VENSEL	(Vensel M.K. #1 108A)	#1	#1
063 23533	Indiana	Conemaugh	EDWARD D KUCKLUCK	(Waddle, A. J. #1 209A)	#1	#1
063 22855	Indiana	Conemaugh	EDWARD D KUCKLUCK	(Waddle, A. J. #2 209A)	#2	#2
063 20185	Indiana	Conemaugh	A J WADDLE	(Waddle, A. J. #3 209A)	#3	#3
063 20649	Indiana	Conemaugh	WESTMORELAND MINING	(Westmoreland Mng. Co. #2 226A)	#2	#2
063 21898	Indiana	Conemaugh	BARNES & TUCKER	(Westmoreland Mng. Co. #2 18A)	#2	#2
063 23261	Indiana	Conemaugh	BARNES & TUCKER	(Westmoreland Mng. Co. #1 10A)	#1	#1
063 21043	Indiana	Conemaugh	WESTMORELAND MINING	(Westmoreland Mng. Co. #1 18A)	#1	#1

**DEP USE ONLY** Initial (DEP R.P.M. or other)

RECEIVED  
DEC 26 2006  
DEP, SOUTHWEST REGION  
OIL & GAS  
ENVIRONMENTAL PROTECTION



Application for Transfer of Well Permit or Registration

<b>TRANSFER FROM</b>		<b>TRANSFER TO</b>	
Name	OGO#	Name	OGO#
T.W. PHILLIPS GAS AND OIL CO. 12913		T.W. PHILLIPS GAS SUPPLY CORP.	
<b>WELLS TO BE TRANSFERRED</b>			

DEP Permit/Reg #

USE (Well API#)	County	Municipality	Farm Name DEP Name (Co. Name)	Well No. Ser #	Proj/ Ser #
063 20729	Indiana	Conemaugh	WESTMORELAND MINING (Westmoreland Mng. Co. #1 226A)	#1	#1
063 20812	Indiana	Conemaugh	WESTMORELAND MINING (Westmoreland Mng. Co. #3 555A)	#3	#3
063 20712	Indiana	East Mahoning	NINA M LEWIS (Alison, Laura E. #1 425A)	#1	#1
063 21097	Indiana	East Mahoning	AMERICAN TRUSTEE & TRANSFER (Am. T. & T. Corp #1 46A)	#1	#1
063 00205	Indiana	East Mahoning	DANKS AUL (Aul, Danks #1 108A)	#1	#1
063 21098	Indiana	East Mahoning	ROBERT B & LOUFLA D. MARIN (Aul, Danks #2 498A)	#2	#2
063 24432	Indiana	East Mahoning	RAYMOND C AND BLAINE MCADOO (Beatty, Harry M. #1 60A)	#1	#1
063 22261	Indiana	East Mahoning	J DEWEY BEATTY (Beatty, Harry M. #2 60A)	#2	#2
063 21200	Indiana	East Mahoning	IRENE VIRGINIA HUMPHREY (Brilhart, G. E. #1 31A)	#1	#1
063 20302	Indiana	East Mahoning	JOHN FRANKLIN (Brilhart, M. J. #1 75A)	#1	#1
063 21209	Indiana	East Mahoning	GRACE M BRILLHART (Brilhart, P. W. #1 5A)	#1	#1
063 21931	Indiana	East Mahoning	A DEAN BROWN (Brown, A. Dean #1 15A)	#1	#1
063 20525	Indiana	East Mahoning	NORRIS BROWN (Brown, Joseph #1 40A)	#1	#1
063 20249	Indiana	East Mahoning	LEON S WILLIAMS (Butler, Zelda #2 68A)	#2	#2
063 24305	Indiana	East Mahoning	REFORMED PRESBY WOMENS (Crozier, J. F. #1 113A)	#1	#1
063 20483	Indiana	East Mahoning	FIRST NATIONAL BANK IN INDIANA (F.N.B. Of Indiana #1 18A)	#1	#1
063 24367	Indiana	East Mahoning	EDNA RUTH BROWN (Feisthans, Edwin F. #1 60A)	#1	#1
063 20269	Indiana	East Mahoning	ARTHUR F ACKERSON (Fulmer, J. W. #2 114A)	#2	#2
063 00199	Indiana	East Mahoning	S B GOOD (Good, S. B. #1 240A)	#1	#1
063 20903	Indiana	East Mahoning	JOHN L HOPKINS (Hopkins, John L. #1 117A)	#1	#1
063 21856	Indiana	East Mahoning	RAYMOND L LEE (Hopkins, William W. #1 115A)	#1	#1
063 00200	Indiana	East Mahoning	G R KINNAN (Kinnan, George R. #1 85A)	#1	#1
063 24781	Indiana	East Mahoning	BARBARA ANN ANDERSON (Langham, H. B. #1 103A)	#1	#1
063 00170	Indiana	East Mahoning	H P LEWIS (Lewis, H. P. #1 175A)	#1	#1
063 24794	Indiana	East Mahoning	CLIFFORD A LEWIS (Lewis, Nina M. #1 116A)	#1	#1
063 00201	Indiana	East Mahoning	J S LIGHTCAP (Lightcap, J. S. #1 120A)	#1	#1
063 20560	Indiana	East Mahoning	JOHN DALLAS LOUGHRY (Loughery, J. S. #2 123A)	#2	#2
063 20542	Indiana	East Mahoning	J N LOUGHRY (Loughery, J. N. Est. #1 119A)	#1	#1
063 23356	Indiana	East Mahoning	MUSSER FORESTS (Lowman, F. W. #1 90A)	#1	#1
063 20930	Indiana	East Mahoning	MUSSER FORESTS (McPherson, Jr., D. P. #2 620A)	#2	#2
063 22593	Indiana	East Mahoning	J M MCSWEENEY (McSweeney, J. M. #1 45A)	#1	#1
063 22594	Indiana	East Mahoning	J M MCSWEENEY (McSweeney, J. M. #2 45A)	#2	#2
063 20658	Indiana	East Mahoning	GLENN H MEANS (Means, A. L. #1 6A)	#1	#1
063 20815	Indiana	East Mahoning	GLEN H MEANS (Means, A. L. #1 37A)	#1	#1
063 22576	Indiana	East Mahoning	NOAH D J AND SELINA B MILLER (Miller, N.D.J. & S. B. #1 120A)	#1	#1
063 20598	Indiana	East Mahoning	LUCILLER WORK (Moor, T. A. #1 102A)	#1	#1
063 21264	Indiana	East Mahoning	LUCILLE R WORK (Moor, T. A. #2 102A)	#2	#2
063 22309	Indiana	East Mahoning	J T & M H MARSHALL (Moor, W. H. #1 140A)	#1	#1
063 21130	Indiana	East Mahoning	JOHN R ANTHONY (Mottom, Caroline E. #1 74A)	#1	#1
063 21210	Indiana	East Mahoning	JOHN R ANTHONY (Mottom, Caroline E. #2 74A)	#2	#2
063 21290	Indiana	East Mahoning	LENORA E ISENBERG (Mottom, S. L. #1 128A)	#1	#1

DEP USE ONLY Initial (DEP R.P.M. or other)

RECEIVED  
DEC 26 2006  
ENVIRONMENTAL PROTECTION  
NORTHWEST REGIONAL OFFICE

NOV 26 2006  
DEP, SOUTHWEST REGION  
OIL & GAS



## Application for Transfer of Well Permit or Registration

TRANSFER FROM		TRANSFER TO			
Name	OGO#	Name	OGO#		
T.W. PHILLIPS GAS AND OIL CO. 12913		T.W. PHILLIPS GAS SUPPLY CORP.			
<b>WELLS TO BE TRANSFERRED</b>					
DEP Permit/Reg # USE (Well API #)	County	Municipality	Farm Name DEP Name (Co. Name)	Well No. Ser #	Proj/ Ser #
063 00197	Indiana	East Mahoning	N P NORTH (North, Nathaniel P. #1 53A)	#1	
063 20519	Indiana	East Mahoning	LELAND R & ALTA SMITH PFEIFFER (Pfeiffer, E. E. #1 100A)	#1	
063 24294	Indiana	East Mahoning	RAYMOND D & RACHEL GIBSON (Pfeiffer, H. F. #1 100A)	#1	
063 20599	Indiana	East Mahoning	ERNEST C RORABAUGH (Rorabaugh, Ernest C. #1 44A)	#1	
063 24746	Indiana	East Mahoning	DONALD & MONA SIMPSON (Simpson, Cora L. #1 127A)	#1	
063 20618	Indiana	East Mahoning	OLIVE K SIMPSON (Simpson, R. W. #2 72A)	#2	
063 20240	Indiana	East Mahoning	ROBERT H DILTS (Streams, Blain M. #1 82A)	#1	
063 28307	Indiana	East Mahoning	T W PHILLIPS GAS & OIL (T. W. P. & Kuntz #1 124A)	#1	
063 00203	Indiana	East Mahoning	T. W. P. G & O (T. W. P. & Gabrielson #1 82A)	#1	
063 23017	Indiana	East Mahoning	LUCILLE R WORK (Thompson, H. J. #1 150A)	#1	
063 21245	Indiana	East Mahoning	STEELE L THOMPSON (Thompson, Steele L. #1 70A)	#1	
063 00202	Indiana	East Mahoning	A B WEAVER (Weaver, A. B. #1 107A)	#1	
063 20707	Indiana	East Mahoning	ALBERT WHITAKER (Whitaker, Laura G. #1 8A)	#1	
063 22038	Indiana	East Mahoning	ALTA S WISSINGER (Wissinger, Alta S. #3 144A)	#3	
063 00198	Indiana	East Mahoning	E WORK (Work, Eamest #2 80A)	#2	
063 21497	Indiana	East Mahoning	CORA B WYNCOOP (Wyncoop, Cora B. #1 25A)	#1	
063 20571	Indiana	Grant	ROBERT J BURNS (Bash, Irene #1 87A)	#1	
063 20438	Indiana	Grant	CHARLES W & MARGARET BIEGENWALD (Biegenwald, C.W. & M. #1 52)	#1	
063 23107	Indiana	Grant	A K BODENHORN (Bodenhorn, A. K. #1 40A)	#1	
063 21263	Indiana	Grant	LULU M STEWART (Brauglier, A. L. #2 154A)	#2	
063 21787	Indiana	Grant	LULU M STEWART (Brauglier, A. L. #3 154A)	#3	
063 21793	Indiana	Grant	LULU M STEWART (Brauglier, A. L. #4 154A)	#4	
063 23802	Indiana	Grant	ROBERT & SHIRLEY SHIELDS (Brauglier, D. J. #1 112A)	#1	
063 21595	Indiana	Grant	MUSSER FORESTS (Brillhart, Harry W. #1 220A)	#1	
063 20616	Indiana	Grant	CLAIR BURKETT (Burkett, Clair #1 108A)	#1	
063 21573	Indiana	Grant	ROYAL OIL & GAS (Clark, H. E. Est. #1 305A)	#1	
063 21304	Indiana	Grant	RALPH H & AGNES DOTY (Doty, J. S. #1 114A)	#1	
063 21631	Indiana	Grant	CHESTER E & JUNE ELLIOTT (Elliot, C. E. & J. #1 70A)	#1	
063 21785	Indiana	Grant	MARGARET E GUTHRIE (Guthrie, Margaret E. #1 14A)	#1	
063 22556	Indiana	Grant	R J & D F HETZLER (Hetzier & Sheesley #1 72A)	#1	
063 22313	Indiana	Grant	HOWARD E HUTTON (Hutton, Howard E. #1 54A)	#1	
063 23800	Indiana	Grant	RITCHEY J & DOROTHY F HETZLER (Pierce, William E. #1 50A)	#1	
063 21436	Indiana	Grant	W A SCHROTH (Rochester, J. H. #3 400A)	#3	
063 25154	Indiana	Grant	LEONARD R WORK (Rochester, J. H. #5 400A)	#5	
063 22669	Indiana	Grant	W A SCHROTH (Schroth, W. A. #1 55A)	#1	
063 20085	Indiana	Montgomery	ARON P CLARK & J O CLARK F.W.P. CLARK (Clark, Winifred P. #1 198A)	#1	
063 21588	Indiana	Montgomery	O S GORMAN (Gorman, O. S. #1 84A)	#1	
063 00347	Indiana	Montgomery	GRANT KERR (Kerr, Grant #1 159A)	#1	
063 20899	Indiana	Montgomery	CLAUDE PLOUSE (Plouse, Claude #1 30A)	#1	
063 21214	Indiana	North Mahoning	LEE C PAUL W & LEE C BARNETT (Barnett, F. A. #1 75A)	#1	
063 30869	Indiana	North Mahoning	J MURRAY BAUN (Baun, J. Murray #2 66A)	#2	

RECEIVED

DEC 26 2006

NOV 20 2006

DEP, SOUTHWEST REGION  
OIL & GASENVIRONMENTAL PROTECTION  
NORTHWEST REGIONAL OFFICE



## Application for Transfer of Well Permit or Registration

TRANSFER FROM		TRANSFER TO			
Name	OGO#	Name	OGO#		
T.W. PHILLIPS GAS AND OIL CO. 12913		T.W. PHILLIPS GAS SUPPLY CORP.			
<b>WELLS TO BE TRANSFERRED</b>					
DEP Permit/Reg # USE (Well API #)	County	Municipality	Farm Name DEP Name (Co. Name)	Well No. Ser #	Proj/ Ser #
063 00250	Indiana	North Mahoning	MARY R BECK (Beck, Mary R. #1 45A)		#1
063 00188	Indiana	North Mahoning	BLACK & A T & T (Black & A.T.&T. Corp. #1 70A)		#1
063 00259	Indiana	North Mahoning	WILLIAM BUSH (Bush, William #1 26A)		#1
063 00189	Indiana	North Mahoning	WILLIAM BUSH (Bush, William #1 72A)		#1
063 21403	Indiana	North Mahoning	R & E OBRADOVICH (Cochran, David #1 214A)		#1
063 21552	Indiana	North Mahoning	WALTER AYAKO (Graham, James #2 55A)		#2
063 00184	Indiana	North Mahoning	G M DAVIS (Davis, George M. #1 107A)		#1
063 20586	Indiana	North Mahoning	EMIL J & ELVA D HECHT (Dom, William #2 150A)		#2
063 20584	Indiana	North Mahoning	EMIL J & ELVA D HECHT (Dom, William & Elva #1 150A)		#1
063 00185	Indiana	North Mahoning	C ELKIN (Elkin, Clayton #1 155A)		#1
063 00186	Indiana	North Mahoning	C ELKIN (Elkin, Clayton #2 155A)		#2
063 20853	Indiana	North Mahoning	LILY RUTH POND (Fireman, Henry Est. #3 160A)		#3
063 21153	Indiana	North Mahoning	C F GAHAGEN (Gahagen, C. F. #2 120A)		#2
063 20557	Indiana	North Mahoning	SAMUEL S & RUTH GAMBLE (Gamble, Jennie M. #1 58A)		#1
063 20773	Indiana	North Mahoning	SAMUEL S GAMBLE (Gamble, Jennie M. #1 142A)		#1
063 20365	Indiana	North Mahoning	WAYNE & VERA J STITLER (Heitzenrater, S. J. #2 160A)		#2
063 20835	Indiana	North Mahoning	WAYNE & VERA J STITLER (Heitzenrater, S. J. #3 160A)		#3
063 00213	Indiana	North Mahoning	A S KERR (Kerr, A. S. #2 90A)		#2
063 21386	Indiana	North Mahoning	WM A CLEMENTSON (Kinsell, Ida J. #2 50A)		#2
063 20597	Indiana	North Mahoning	WM A CLEMENTSON (Kinsell, Ida J. #1 55A)		#1
063 20872	Indiana	North Mahoning	DALE SPRANKLE (Knauf, Howard P. #2 197A)		#2
063 21195	Indiana	North Mahoning	DALE SPRANKLE (Knauf, Howard P. #3 197A)		#3
063 21347	Indiana	North Mahoning	MARK A & BERTHA E ANTHONY (Lorenzo, Dr. Frank A. #1 107A)		#1
063 21388	Indiana	North Mahoning	MARK A & BERTHA E ANTHONY (Lorenzo, Dr. Frank A. #2 107A)		#2
063 00193	Indiana	North Mahoning	A C MARTIN (Martin, Annie C. #2 133A)		#2
063 21643	Indiana	North Mahoning	BOYD S MCLAUGHLIN (McLaughlin, J. A. #1 12A)		#1
063 21096	Indiana	North Mahoning	GLENN H MEANS (Means, Glenn H. #2 100A)		#2
063 00253	Indiana	North Mahoning	REED MITCHELL (Mitchell, Reed #1 80A)		#1
063 20763	Indiana	North Mahoning	JAMES BARRY (Mottam, J. B. #1 146A)		#1
063 00254	Indiana	North Mahoning	W C NEAL (Neal, W. C. #1 20A)		#1
063 00255	Indiana	North Mahoning	WALTER C NEAL (Neal, Walter C. #1 69A)		#1
063 23077	Indiana	North Mahoning	WENDELL & RUTH NEAL (Neal, Wendel #1 12A)		#1
063 20819	Indiana	North Mahoning	ALICE BLOSE (Neale, Jr., David #1 170A)		#1
063 21008	Indiana	North Mahoning	JOHN H FREAS (Robinson, E. W. #1 200A)		#1
063 21137	Indiana	North Mahoning	JOHN H FREAS (Robinson, E. W. #2 200A)		#2
063 21100	Indiana	North Mahoning	JOHN H FREAS (Robinson, E. W. #3 200A)		#3
063 20369	Indiana	North Mahoning	ELMER M SHIELDS (Shields, G. W. #1 75A)		#1
063 00196	Indiana	North Mahoning	M C SHRAUGER (Shrauger, Mrs. M. C. #1 194A)		#1
063 00256	Indiana	North Mahoning	C M SMITH (Smith, Dr. C. M. #1 188A)		#1
063 00247	Indiana	North Mahoning	JACOB G SMITH (Smith, Jacob G. #2 157A)		#2
063 21389	Indiana	North Mahoning	H B NEAL (Stear-McConn. & Neal #1 165A)		#1

DEP USE ONLY

Initial (DEP  
R.P.M. or other)

RECEIVED



Application for Transfer of Well Permit or Registration

<b>TRANSFER FROM</b>		<b>TRANSFER TO</b>	
Name	OGO#	Name	OGO#
T.W. PHILLIPS GAS AND OIL CO. 12913		T.W. PHILLIPS GAS SUPPLY CORP.	
<b>WELLS TO BE TRANSFERRED</b>			

DEP Permit/Reg # USE (Well/API #)	County	Municipality	Farm Name	DEP Name (Co. Name)	Well No.	Proj./ Ser #
063 20243	Indiana	North Mahoning	J CHRIST WACHOH	(Wachob, G. U. #1 185A)	#1	#1
063 20818	Indiana	North Mahoning	J CHRIST WACHOB	(Wachob, G. U. #2 185A)	#2	#2
063 21146	Indiana	North Mahoning	J CHRIST WACHOB	(Wachob, G. U. #3 185A)	#3	#3
063 00249	Indiana	North Mahoning	RL & MABEL WERTZ	(Wertz, R. L. & Mabel #1 130A)	#1	#1
063 21132	Indiana	North Mahoning	NANCY J CHAMBERS	(Wining, Caroline #1 57A)	#1	#1
063 21152	Indiana	North Mahoning	NANCY J CHAMBERS	(Wining, Caroline #2 57A)	#2	#2
063 21135	Indiana	North Mahoning	JOHN R ANTHONY	(Wortman, Admr. C. M. #1 150A)	#1	#1
063 20884	Indiana	North Mahoning	JOHN R ANTHONY	(Wortman, Admr. C. M. #2 150A)	#2	#2
063 21101	Indiana	North Mahoning	JOHN R ANTHONY	(Wortman, Admr. C. M. #3 150A)	#3	#3
063 01136	Indiana	North Mahoning	Wortman C M 4	(Wortman, Admr. C. M. #4 150A)	#4	#4
063 21158	Indiana	North Mahoning	JOHN R ANTHONY	(Wortman, Admr. C. M. #5 150A)	#5	#5
063 21395	Indiana	North Mahoning	R & D ENGLE	(Wyant, D.H. & Ramey #2 135A)	#2	#2
063 21396	Indiana	North Mahoning	R H ENGLE	(Wyant, D.H. & Ramey #3 135A)	#3	#3
063 00246	Indiana	North Mahoning	D H WYANT & MARY E RAMEY	(Wyant, W.H. & Ramey #1 135A)	#1	#1
063 24766	Indiana	North Mahoning	GEORGE A YOAS	(Yoas, A. I. #1 75A)	#1	#1
063 20765	Indiana	North Mahoning	GEORGE A YOAS	(Yoas, A. I. #2 75A)	#2	#2
063 00367	Indiana	Pine	WILMORE COAL	(Wilmore Coal Co. #1 1119A)	#1	#1
063 00368	Indiana	Pine	WILMORE COAL	(Wilmore Coal Co. #2 1119A)	#2	#2
063 21432	Indiana	Rayne	JOHN C ABBEY	(Abbey, John C. #1 120A)	#1	#1
063 21433	Indiana	Rayne	JOHN C ABBEY	(Abbey, John C. #2 120A)	#2	#2
063 21417	Indiana	Rayne	ARTHUR W FRY	(Anderson, H. M. & Alex #2 165A)	#2	#2
063 24791	Indiana	Rayne	A B & ANNA H ANSLEY	(Ansley & Daker #1 110A)	#1	#1
063 00308	Indiana	Rayne	C T BELL	(Bell, C.T. #1 100A)	#1	#1
063 21250	Indiana	Rayne	EDWARD BAKER	(FMYL E C BUCHHEIT) (Buchheit, E. C. #3 161A)	#3	#3
063 21641	Indiana	Rayne	LEROY BUSH	(Bush, Leroy #1 76A)	#1	#1
063 00309	Indiana	Rayne	EASTERN COAL	(Eastern Coal Corp. #1 107A)	#1	#1
063 21385	Indiana	Rayne	EDGAR M FULMER	(Fulmer, Edgar M. #1 85A)	#1	#1
063 21307	Indiana	Rayne	CLARENCE H & JOHN W GROFT	(Groft, Matilda #1 106A)	#1	#1
063 21260	Indiana	Rayne	CLARENCE & JOHN GROFT	(Groft, Matilda #2 106A)	#2	#2
063 00310	Indiana	Rayne	J B HOUSER	(Houser, J. B. #1 126A)	#1	#1
063 21188	Indiana	Rayne	JOE W & MARY IRENE HOUSER	(Houser, J. B. #2 126A)	#2	#2
063 21265	Indiana	Rayne	JOE W & MARY IRENE HOUSER	(Houser, J. B. #3 126A)	#3	#3
063 00311	Indiana	Rayne	LEWIS & McMILLEN	(Lewis & McMillen #1 104A)	#1	#1
063 20345	Indiana	Rayne	MCLEHOES & BUCHANAN	(McElhoes & Buchanan #1 220A)	#1	#1
063 21651	Indiana	Rayne	JOHN M HOUSTON	(McElhoes, J. E. #2 150A)	#2	#2
063 20429	Indiana	Rayne	S A NASTASE	(McGara, H. M. & F. W. #1 165A)	#1	#1
063 24797	Indiana	Rayne	ALBERT & DONNA KIRCHARTZ	(Peterman, Dr. J. H. #1 80A)	#1	#1
063 00392	Indiana	Rayne	REBECCA PETERMAN	(Peterman, Rebecca J. #1 90A)	#1	#1
063 00339	Indiana	Rayne	WM SCHURR	(Schurr, William #1 167A)	#1	#1
063 21244	Indiana	Rayne	EDWARD & ANNA BAKER	(Schurr, William #3 167A)	#3	#3
063 00342	Indiana	Rayne	LUCINDA SNYDER	(Snyder, Lucinda #1 158A)	#1	#1

DEP USE ONLY Initial (DEP R.P.M. or other)

RECEIVED

DEC 26 2006

DEP, SOUTHWEST REGION OIL & GAS ENVIRONMENTAL PROTECTION NORTHWEST REGIONAL OFFICE

NOV 20 2006



Application for Transfer of Well Permit or Registration

<b>TRANSFER FROM</b>		<b>TRANSFER TO</b>	
Name	OGO#	Name	OGO#
T.W. PHILLIPS GAS AND OIL CO. 12913		T.W. PHILLIPS GAS SUPPLY CORP.	

**WELLS TO BE TRANSFERRED**

DEP Permit/Reg # USE (Well API #)	County	Municipality	Farm Name	DEP Name (Co. Name)	Well No.	Proj/ Ser #
063 00343	Indiana	Rayne	LUCINDA SNYDER (Snyder, Lucinda #2 158A)			#2
063 00344	Indiana	Rayne	W C THOMAS (Thomas, W. C. #1 192A)			#1
063 21541	Indiana	Rayne	SLOAN LIGHTCAP (Thompson & Wynn, Lelsen #1 25A)			#1
063 21418	Indiana	Rayne	RICHARD & DELORES THOMPSON (Thompson, B. R. #2 225A)			#2
063 21069	Indiana	Rayne	FRED & DOROTHY MUSSER (Weiss, Fred #1 117A)			#1
063 20381	Indiana	Rayne	L. & ROXIE FETTERMAN (William, A. H. #2 156A)			#1
063 20355	Indiana	Rayne	BERT & EDNA FAIRMAN (Wynkoop, M. A. #1 74A)			#1
063 21045	Indiana	South Mahoning	B & S COAL (B & S Coal & Coke Co. #1 74A)			#1
063 20235	Indiana	South Mahoning	BUFFALO & SUSQUEHANNA COAL COKE (B & S Coal & Coke Co. #1 106 #1			#1
063 21809	Indiana	South Mahoning	B & S COAL (B & S Coal & Coke Co. #2 106A)			#2
063 22213	Indiana	South Mahoning	THOMAS BERESNYAK (Beresnyak, Thomas #1 50A)			#1
063 22214	Indiana	South Mahoning	THOMAS BERESNYAK (Beresnyak, Thomas #2 50A)			#2
063 22581	Indiana	South Mahoning	MABEL BOUCHER (Boucher, Mabel #1 60A)			#1
063 20353	Indiana	South Mahoning	JOHN G & PEARL DILTS (Brewer, Ebert #1 66A)			#1
063 22575	Indiana	South Mahoning	REUBEN L & CLARA N BYLER (Byler, Rueben & Clara #1 40A)			#1
063 00278	Indiana	South Mahoning	C M CRIBBS (Cribbs, C. M. #1 67A)			#1
063 24384	Indiana	South Mahoning	BLAIR SHANK (Frantz Brothers #1 35A)			#1
063 22563	Indiana	South Mahoning	BYRON M & JOYCE FRICK (Frick, B. M. & J. #1 60A)			#1
063 20331	Indiana	South Mahoning	R & P COAL (H. C. M. Co. #1 164A)			#1
063 20907	Indiana	South Mahoning	HARVEY L HALL (Hall, Harvey #1 45A)			#1
063 20925	Indiana	South Mahoning	JAMES H HEBERLING (Heberling, Gabriel #2 80A)			#2
063 23947	Indiana	South Mahoning	E BLAINE & VIOLA E FULMER (Hoover, J. T. #1 80A)			#1
063 23369	Indiana	South Mahoning	E T & R A JUART (Juart, Charles #2 62A)			#2
063 22580	Indiana	South Mahoning	A S JUART (Juart, Charles #3 62A)			#3
063 00273	Indiana	South Mahoning	S B LEWIS (Lewis, S. B. #1 144A)			#1
063 21254	Indiana	South Mahoning	H G LOCKHART (Lockhart, H. G. #2 78A)			#2
063 21274	Indiana	South Mahoning	H G LOCKHART (Lockhart, H. G. #3 78A)			#3
063 22574	Indiana	South Mahoning	JOHN W & MARY M MILLER (Lukhart, C. W. & A. C. #2 138A)			#2
063 00274	Indiana	South Mahoning	MARSHALL & WOODSIDE (Marshall & Woodside #1 106A)			#1
063 28450	Indiana	South Mahoning	DAN U MILLER (Marshall, E. L. #1 47A)			#1
063 21099	Indiana	South Mahoning	J DALE MARSHALL (Marshall, J. D. #1 64A)			#1
063 21287	Indiana	South Mahoning	EMABEL MARSHALL (Marshall, J. D. #2 94A)			#2
063 22061	Indiana	South Mahoning	CARL V MCGAHEN (McGahen, Carl V. #1 63A)			#1
063 22225	Indiana	South Mahoning	C GORDON CRAMER (McMillen, Ruth & Effie #2 110A)			#2
063 21955	Indiana	South Mahoning	PAUL & MILDRED F MARCOLINE (McMillen, Clyde A. #2 37A)			#2
063 21872	Indiana	South Mahoning	ROBERT H & DONALD C MILLER (Miller-Vanhorn #1 2A)			#1
063 23801	Indiana	South Mahoning	DOROTHY MARSHALL (Nolf, K. E. #1 100A)			#1
063 00275	Indiana	South Mahoning	KAMEL E YOUSSEF (Seanor, George W. #1 71A)			#1
063 21794	Indiana	South Mahoning	ROBERT H & SARAH H SHIREMAN (Shireman, R. H. & S. H. #1 45A)			#1
063 22174	Indiana	South Mahoning	PEARLE STEAR (Stear, Pearl E. #1 80A)			#1
063 22176	Indiana	South Mahoning	PEARLE STEAR (Stear, Pearl E. #2 80A)			#2

<b>DEP USE ONLY</b>	Initial (DEP R.P.M. or other)
---------------------	----------------------------------

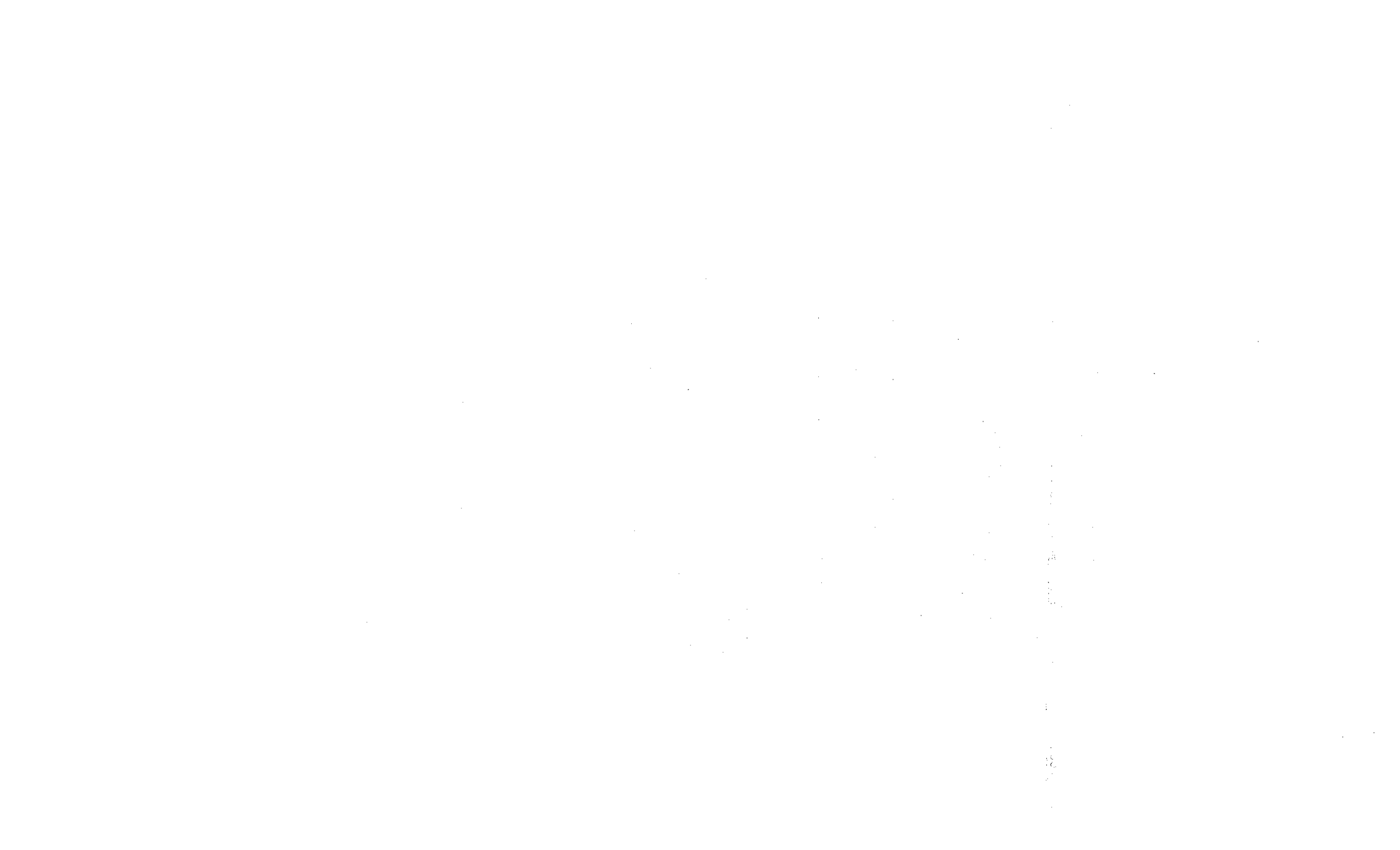
ENVIRONMENTAL PROTECTION  
NORTHWEST REGIONAL OFFICE

RECEIVED

DEC 26 2006

DEF. SOUTHWEST REGION  
OIL & GAS

NOV 20 2006



Application for Transfer of Well Permit or Registration

<b>TRANSFER FROM</b>		<b>TRANSFER TO</b>	
Name	OGO#	Name	OGO#
T.W. PHILLIPS GAS AND OIL CO. 12913		T.W. PHILLIPS GAS SUPPLY CORP.	
<b>WELLS TO BE TRANSFERRED</b>			

DEP Permit/Reg #

USE (Well API#)	County	Municipality	Farm Name	DEP Name (Co. Name)	Well No.	Proj / Ser #
063 22177	Indiana	South Mahoning	PEARL E STEAR	(Stear, Pearl E. #3 80A)	#3	#3
063 22178	Indiana	South Mahoning	PEARL E STEAR	(Stear, Pearl E. #4 80A)	#4	#4
063 21849	Indiana	South Mahoning	ZELLA A STUCHUL	(Stuchel, J. Reid #2 115A)	#2	#2
063 20679	Indiana	South Mahoning	CYE B DILTS	(Vanhorn, Belle W. #2 102A)	#2	#2
063 21252	Indiana	South Mahoning	CYE B DILTS	(Vanhorn, Belle W. #3 102A)	#3	#3
063 20757	Indiana	South Mahoning	NORMAN G VANHORN	(Vanhorn, H. B. #1 27A)	#1	#1
063 00276	Indiana	South Mahoning	G L WELCH	(Welch, G. L. #2 127A)	#2	#2
063 21783	Indiana	South Mahoning	LAWRENCE L WELLS	(Wells, Milton #3 50A)	#3	#3
063 23121	Indiana	South Mahoning	WILLIAM P & RUTH E WILLIAMS	(Williams, W. P. & R. E. #1 27A)	#1	#1
063 22357	Indiana	Washington	B & S COAL	(B & S Coal & Coke Co. #1 135A)	#1	#1
063 21921	Indiana	Washington	B & S COAL	(B & S Coal & Coke Co. #2 136A)	#2	#2
063 00307	Indiana	Washington	O T BELL	(Bell, C. T. #1 212A)	#1	#1
063 21126	Indiana	Washington	MARTHA R BELL	(Bell, M. R. #1 50A)	#1	#1
063 00315	Indiana	Washington	LOUISA BLACK	(Black, Louisa #1 100A)	#1	#1
063 21397	Indiana	Washington	JOSEPH J BONACCI	(Bonacci, Joseph J. #1 20A)	#1	#1
063 21127	Indiana	Washington	JOSEPH J BONACCI	(Bonacci, Joseph J. #1 50A)	#1	#1
063 20197	Indiana	Washington	CLARENCE M BOTHELL	(Bothell, Clarence M. #1 80A)	#1	#1
063 21698	Indiana	Washington	IRWIN DEAN & THERESE BOTHELL	(Bothell, D. E. Agt. #1 30A)	#1	#1
063 21538	Indiana	Washington	DONALD P BOTHELL	(Bothell, D. P. #1 125A)	#1	#1
063 20222	Indiana	Washington	CARL BRADY	(Brady, Carl #1 50A)	#1	#1
063 20892	Indiana	Washington	FRED A & DOROTHY MUSSER	(Brewer, Charles M. #2 84A)	#2	#2
063 20263	Indiana	Washington	O E & C BREWER	(Brewer, O. & C. #1 70A)	#1	#1
063 21811	Indiana	Washington	O E & C BREWER	(Brewer, O. & C. #2 70A)	#2	#2
063 22109	Indiana	Washington	ROBERT BREWER	(Brewer, Robert #1 17A)	#1	#1
063 22542	Indiana	Washington	JOHN C BURNS	(Burns, Clark #1 11A)	#1	#1
063 21604	Indiana	Washington	JOHN C BURNS	(Burns, John C. #1 26A)	#1	#1
063 00320	Indiana	Washington	LEAH CARNAHAN	(Carnahan, Leah #2 160A)	#2	#2
063 21807	Indiana	Washington	CLYDE E PARK	(Carnahan, Margaret #2 80A)	#2	#2
063 25345	Indiana	Washington	WILLIAM C AND MARTHA E CONDRON	(Condron, W. C. #1 113A)	#1	#1
063 21094	Indiana	Washington	WILLIAM C & MARTHA E CONDRON	(Condron, W. C. #2 113A)	#2	#2
063 22170	Indiana	Washington	J R CRIBBS	(Cribbs, J. R. #1 57A)	#1	#1
063 22194	Indiana	Washington	J R CRIBBS	(Cribbs, J. R. #3 57A)	#3	#3
063 20617	Indiana	Washington	NICK & DOROTHY YONICK	(Ozabowski, Leon & Anna #1 50A)	#1	#1
063 23084	Indiana	Washington	GEORGE E & LUCILLE G WYANT	(Elkin, A. C. #1 106A)	#1	#1
063 23438	Indiana	Washington	G W CARNAHAN	(Fairman, J. W. #1 115A)	#1	#1
063 20282	Indiana	Washington	L D FAIRMAN	(Fairman, L. D. #1 63A)	#1	#1
063 20573	Indiana	Washington	LEE FAIRMAN	(Fairman, Lee #1 90A)	#1	#1
063 20358	Indiana	Washington	MILTON & STELLA FAIRMAN	(Fairman, Murray J. #1 100A)	#1	#1
063 21999	Indiana	Washington	AMERICAN TRUSTEE & TRANSFER	(Fee & Tomb #1 290A)	#1	#1
063 00355	Indiana	Washington	FEE & TOMB	(Fee & Tomb #2 290A)	#2	#2
063 20481	Indiana	Washington	HARRY & DOLORES GILLEN	(Fenner, C. M. #1 56A)	#1	#1

RECEIVED

DEC 26 2006

DEP, SOUTHWEST REGION  
ENVIRONMENTAL PROTECTION  
NORTHWEST REGIONAL OFFICE

NOV 20 2006

DEP USE ONLY	Initial (DEP R.P.M. or other)
--------------	-------------------------------



Application for Transfer of Well Permit or Registration

<b>TRANSFER FROM</b>		<b>TRANSFER TO</b>	
Name	OGO#	Name	OGO#
T.W. PHILLIPS GAS AND OIL CO. 12913		T.W. PHILLIPS GAS SUPPLY CORP.	
<b>WELLS TO BE TRANSFERRED</b>			

DEP Permit/Reg #

USE (Well API #)	County	Municipality	Farm Name	DEP Name (Co. Name)	Proj/ Well No. Ser #
063 23396	Indiana	Washington	LOGAN L & LINDA K CRIBBS (Ferguson, Paul #1 48A)		#1
063 21714	Indiana	Washington	FLORA M FILLER (Filler E. C. #1 88A)		#1
063 21806	Indiana	Washington	DAVID S FRICK (Fleming, M. M. #2 131A)		#2
063 21095	Indiana	Washington	THOMAS M FRICK (Frick, Thomas M. #1 100A)		#1
063 21625	Indiana	Washington	DAVID L & ELIZABETH A LITTLE (Frye, J. E. #1 114A)		#1
063 00327	Indiana	Washington	J.C. GROVE (Grove, J. C. #1 70A)		#1
063 20198	Indiana	Washington	EUGENE MURDICK (Helman, Gordon M. #1 66A)		#1
063 21562	Indiana	Washington	MARTHA L ISEMAN (Iseman, Martha L. #1 61A)		#1
063 23517	Indiana	Washington	WILLIAM G JACK (Jack, A. E. #1 175A)		#1
063 00325	Indiana	Washington	W C JAMISON (Jamison, W. C. #1 105A)		#1
063 00269	Indiana	Washington	W L JOHNSTON (Johnston, W. Lowry #1 117A)		#1
063 00324	Indiana	Washington	JAMES L JONES (Jones, James L. #2 113A)		#2
063 20864	Indiana	Washington	B B KUNKLE (Kunkle, B. B. #2 81A)		#2
063 20539	Indiana	Washington	DORSEY F KUNKLE (Kunkle, Dorsey F. #1 76A)		#1
063 00270	Indiana	Washington	LIGHTCAP & LITTLE (Lightcap & Little #1 85A)		#1
063 20242	Indiana	Washington	EDWARD P LISZEWSKI (Liszewski, John #1 114A)		#1
063 25373	Indiana	Washington	SHERMAN A & FRANCES R GILL (Lukehart, C. F. #1 70A)		#1
063 22405	Indiana	Washington	SHERMAN A GILL (Lukehart, C. F. #2 70A)		#2
063 20199	Indiana	Washington	BRYAN MILLER (Miller, Bryan #1 65A)		#1
063 23797	Indiana	Washington	HERMAN & IRENE WHITE (Miller, Clayton #1 100A)		#1
063 22150	Indiana	Washington	GLENN C MILLER (Miller, Glenn C. #1 100A)		#1
063 24009	Indiana	Washington	Joseph & Margaret Williams (Mulberger, A. G. #1 63A)		#1
063 21935	Indiana	Washington	JOHN J ORLASKEY (Orlosky, Steve #1 50A)		#1
063 20754	Indiana	Washington	R & P COAL COMPANY (R. & P. Coal Co. #1 322A)		#1
063 20488	Indiana	Washington	R & P COAL (R. & P. Coal Co. #3 322A)		#3
063 24880	Indiana	Washington	LOWRY A & GENEVIEVE M FAIRMANN (Richards, Lavinia #1 141A)		#1
063 20817	Indiana	Washington	WM & DONNA MCINTIRE (Seanor & Streams #1 76A)		#1
063 00314	Indiana	Washington	AFTON SHAFFER (Sheffar, Afton B. #1 61A)		#1
063 23394	Indiana	Washington	ROBERT & GLORIA WEPPELMAN (Sourwine, Dale #1 50A)		#1
063 00334	Indiana	Washington	MYRL SPENCE (Spence, Myrl #1 108A)		#1
063 00312	Indiana	Washington	E STEWART (Stewart, Earnest #1 53A)		#1
063 00313	Indiana	Washington	J STUCHELL (Stuchell, Joseph #1 200A)		#1
063 21618	Indiana	Washington	HAROLD L & VIRGINIA STUCHELL (Stuchell, Mabel #1 62A)		#1
063 20255	Indiana	Washington	JAMES W WALLACE (Wallace, J. W. #1 130A)		#1
063 20453	Indiana	Washington	ELDER L WATTERSON (Watterson, E. L. #1 52A)		#1
063 20454	Indiana	Washington	ELDER L WATTERSON (Watterson, E. L. #2 52A)		#2
063 20231	Indiana	Washington	NOBLE H & HAPSIE C WETZEL (Wetzel, N.H. & H.C. #1 55A)		#1
063 20473	Indiana	Washington	C P WISSINGER (Wissinger, C. P. #1 95A)		#1
063 00237	Indiana	West Mahoning	W H ALLEN (Allen, W. H. #3 160A)		#3
063 20477	Indiana	West Mahoning	W C & RUTH AUL (Aul, J. M. #1 125A)		#1
063 20289	Indiana	West Mahoning	THOMAS R GUYER (Aul, J. M. #2 125A)		#2

<b>DEP USE ONLY</b>	Initial (DEP R.P.M. or other)
---------------------	----------------------------------

RECEIVED  
DEC 26 2006  
ENVIRONMENTAL PROTECTION  
OIL & GAS  
DEP, SOUTHWEST REGION



Application for Transfer of Well Permit or Registration

<b>TRANSFER FROM</b>		<b>TRANSFER TO</b>	
Name	OGO#	Name	OGO#
T.W. PHILLIPS GAS AND OIL CO. 12913		T.W. PHILLIPS GAS SUPPLY CORP.	
<b>WELLS TO BE TRANSFERRED</b>			

DEP Permit/Reg # USE (Well API #)	County	Municipality	Farm Name	DEP Name (Co. Name)	Well No.	Proj/ Ser #
063 27182	Indiana	West Mahoning	W E BARRETT	(Barrett, W. E. #1 62A)	#1	
063 00262	Indiana	West Mahoning	J L BAUMMER	(Baummer, J. L. #1 40A)	#1	
063 00296	Indiana	West Mahoning	BLOSE & STITTELLER	(Blöse & Stitteler #1 120A)	#1	
063 22989	Indiana	West Mahoning	ROBERT J & MARIE D WARNOCK	(Bond, Cynthia #1 65A)	#1	
063 20279	Indiana	West Mahoning	ERNEST GOOD	(Bowser, Arnold H. #1 113A)	#1	
063 20730	Indiana	West Mahoning	ELMO M TRAVIS & USA	(Crawford, Dale B. #2 130A)	#2	
063 00209	Indiana	West Mahoning	C S BRINK	(Brink, C.S. #1 80A)	#1	
063 00238	Indiana	West Mahoning	L B COLEMAN	(Coleman, L. B. #1 106A)	#1	
063 00239	Indiana	West Mahoning	L B COLEMAN	(Coleman, L. B. #2 106A)	#2	
063 20319	Indiana	West Mahoning	MELVIN B & JEMINA S TROYER	(Condron, S. W. #2 150A)	#2	
063 00263	Indiana	West Mahoning	J C CORNMAN	(Cornman, J. C. #1 63A)	#1	
063 00264	Indiana	West Mahoning	DALE B CRAWFORD	(Crawford, Dale B. #1 85A)	#1	
063 24234	Indiana	West Mahoning	CLARENCE & GRACE MOWRY	(Daugherty, S. D. #2 108A)	#2	
063 21617	Indiana	West Mahoning	ELIZ & EMMA D BYLER	(Daugherty, S. D. #3 108A)	#3	
063 21974	Indiana	West Mahoning	J ROBERT & ELINOR B LOCKHART	(Dinger, C. M. #1 80A)	#1	
063 00226	Indiana	West Mahoning	A C DODSON	(Dodson, A. C. #2 110A)	#2	
065 00479	Indiana, <i>Jeff</i>	West Mahoning	W A DRUMMOND	(Drummond, W. A. #1 95A)	#1	
063 23408	Indiana	West Mahoning	JOHN A BYLER	(Elkin, Heirs Wm. #1 142A)	#1	
063 00227	Indiana	West Mahoning	L J ELKIN	(Elkin, L. J. #1 50A)	#1	
063 21812	Indiana	West Mahoning	EDWIN B ARMITAGE	(Elkin, T. C. & R.W. #1 90A)	#1	
063 21813	Indiana	West Mahoning	EDWIN B ARMITAGE	(Elkin, T. C. & R.W. #2 90A)	#2	
063 00210	Indiana	West Mahoning	J FITZGERALD	(Fitzgerald, J. S. #1 100A)	#1	
063 20443	Indiana	West Mahoning	C E SISKAR	(Gahagan, M. M. #4 239A)	#4	
063 20367	Indiana	West Mahoning	R E BARRETT	(Gaul, S. T. #1 76A)	#1	
063 00299	Indiana	West Mahoning	S T GAUL	(Gaul, S. T. #2 76A)	#2	
063 00298	Indiana	West Mahoning	S T GAUL	(Gaul, S. T. #3 76A)	#3	
063 00223	Indiana	West Mahoning	A L GIBSON	(Gibson, A. L. #1 165A)	#1	
063 20698	Indiana	West Mahoning	GEORGE H GOOD	(Good, W. L. #1 125A)	#1	
063 22283	Indiana	West Mahoning	H D & E COBLENTZ	(Haire, Mrs. A. M. #1 40A)	#1	
063 21609	Indiana	West Mahoning	LYNN D MEYER	(Hazlett & Lydio #2 143A)	#2	
063 20389	Indiana	West Mahoning	I E KERR	(Kerr, H. C. #1 150A)	#1	
063 23344	Indiana	West Mahoning	PAUL KIPPERT	(Kerr, H. C. #2 150A)	#2	
063 20391	Indiana	West Mahoning	HOMER KERR	(Kerr, Homer #1 103A)	#1	
063 24293	Indiana	West Mahoning	A C KERR	(Kerr, Samuel #1 479A)	#1	
063 00228	Indiana	West Mahoning	S KERR	(Kerr, Samuel #10 479A)	#10	
063 21180	Indiana	West Mahoning	A C KERR	(Kerr, Samuel #2 479A)	#2	
063 22367	Indiana	West Mahoning	A C KERR	(Kerr, Samuel #5 479A)	#5	
063 24314	Indiana	West Mahoning	A C KERR	(Kerr, Samuel #6 479A)	#6	
063 20366	Indiana	West Mahoning	A C KERR	(Kerr, Samuel #7 479A)	#7	
063 20392	Indiana	West Mahoning	A C KERR	(Kerr, Samuel #8 479A)	#8	
063 27874	Indiana	West Mahoning	MARTHA M CONDRON	(Kerr, Samuel #9 479A)	#9	

RECEIVED

Page 18 of 29

DEP USE ONLY Initial (DEP R.P.M. or other) 1/9/07 SCA

NOV 20 2006  
DEC 26 2006  
DEP, SOUTHWEST REGION  
OIL & GAS  
ENVIRONMENTAL PROTECTION  
NORTHWEST REGIONAL OFFICE



Application for Transfer of Well Permit or Registration

<b>TRANSFER FROM</b>		<b>TRANSFER TO</b>	
Name	OGO#	Name	OGO#
T.W. PHILLIPS GAS AND OIL CO. 12913		T.W. PHILLIPS GAS SUPPLY CORP.	
<b>WELLS TO BE TRANSFERRED</b>			

DEP Permit/Reg # USE (Well API #)	County	Municipality	Farm Name	DEP Name (Co. Name)	Well No. Ser #	Proj/
063 00215	Indiana	West Mahoning	W J KERR (Kerr, W. J. #3 160A)		#3	
063 00101	Indiana	West Mahoning	J E LANTZ (Lantz, J. E. #3 160A)		#3	
063 00294	Indiana	West Mahoning	ELMER LEWIS (Lewis, Elmer #2 125A)		#2	
063 28099	Indiana	West Mahoning	MONT STAHLMAN LUMBER (Lewis, Mary #2 58A)		#2	
063 00216	Indiana	West Mahoning	M MCCLELLAND (McClelland, Mary #1 102A)		#1	
063 00242	Indiana	West Mahoning	MCGREGOR & SMITH (McGrager & Smith #1-80A)		#1	
063 00393	Indiana	West Mahoning	MINSER/STEVENSON (Minsar & Stevenson #2 138A)		#2	
063 00229	Indiana	West Mahoning	H T NEAL (Neal, H. T. #1 107A)		#1	
063 00230	Indiana	West Mahoning	J NEAL (Neal, Josiah #1 60A)		#1	
063 00231	Indiana	West Mahoning	J NEAL (Neal, Josiah #2 60A)		#2	
065 00480	Indiana	JEFF	T S NEAL (Neal, T. S. #3 130A)		#3	
063 00244	Indiana	West Mahoning	W B NEAL (Neal, W. B. #1 97A)		#1	
063 00283	Indiana	West Mahoning	JERRY NOLF (Noir, Jerry #1 12A)		#1	
063 22675	Indiana	West Mahoning	OSWALT & MOORE (Oswalt & Moore #1 17A)		#1	
063 21167	Indiana	West Mahoning	E H & NELLIE M REICHARD (Reichard, E. H. #1 64A)		#1	
063 27703	Indiana	West Mahoning	MILO & MAZINE WEAVER (Roush, D. R. #2 102A)		#2	
063 21473	Indiana	West Mahoning	PAUL S & KATHRYN FANTASKI (Sink, J. Arthur #1 42A)		#1	
063 00234	Indiana	West Mahoning	E SKINNER (Skinner, Effa L. #2 94A)		#2	
063 00235	Indiana	West Mahoning	E SKINNER (Skinner, Effa L. #3 94A)		#3	
063 00236	Indiana	West Mahoning	M STEAR (Stear, Minerva #1 82A)		#1	
063 20487	Indiana	West Mahoning	GEORGE & JESSIE M WINDOWS (Stear, S. R. #1 104A)		#1	
063 00300	Indiana	West Mahoning	J M & L L STEFFY (Steffy, J. M. & L. L. #1 61A)		#1	
063 00301	Indiana	West Mahoning	M STEFFY (Steffy, Mary #1 74A)		#1	
063 00218	Indiana	West Mahoning	M STUCHAL (Stuchull, May T. #1 57A)		#1	
063 00233	Indiana	West Mahoning	T W PHILLIPS GAS & OIL (T. W. P. & Howard #1 9A)		#1	
063 00219	Indiana	West Mahoning	T R TRAVIS (Travis, Mrs. T. R. #1 123A)		#1	
063 21277	Indiana	West Mahoning	CARL E BARRETT (Walker, G. R. #1 107A)		#1	
063 27969	Indiana	West Mahoning	JAMES K GRIFFITH (Walker, G. R. #2 107A)		#2	
063 21149	Indiana	West Mahoning	A S & MARIAN B KERR (Weaver, S. J. #2 110A)		#2	
063 00288	Indiana	West Mahoning	G S WESTON (Weston, George S. #1 32A)		#1	
063 00289	Indiana	West Mahoning	M WILHELM (Wilhelm, Mathilda J. #1 180A)		#1	
063 00290	Indiana	West Mahoning	FRANK WILLIAMSON (Williamson, Frank #1 60A)		#1	
063 21253	Indiana	West Mahoning	R & M ANATER (Williamson, Frank #3 76A)		#3	
063 21281	Indiana	West Mahoning	RUDOLPH L & MARGARET MANATER (Williamson, Frank #4 76A)		#4	
063 21535	Indiana	West Mahoning	DAVID R WELLS (Wingard, C. A. #1 100A)		#1	
063 20530	Indiana	West Wheatfield	AMERICAN TRUSTEE & TRANSFER CORPORAT (American T. & T. Corp. #1		#1	
063 24220	Indiana	White	ROY R & GOLDIE B TOHMS (Campbell, Martha B. #1 91A)		#1	
063 24226	Indiana	White	KENNETH C & REBEKAH S SINK (Dilis, Bessie O. #1 114A)		#1	
063 23948	Indiana	White	ALVIE E FISHER & ELLEN B (Fry, Clarissa #1 100A)		#1	
063 23845	Indiana	White	M BENNETT & SONS (Ind. Real Estate Co. #1 126A)		#1	
063 22776	Indiana	White	MARY PRIBICKO (Pribicko, Mary #1 123A)		#1	

DEP USE ONLY Initial (DEP R.P.M. or other) SCA 1/8/07

RECEIVED

DEC 26 2006

NOV 20 2006

DEF. GOVERNMENT REGION  
01 & 646

ENVIRONMENTAL PROTECTION  
NORTHWEST REGIONAL OFFICE



Application for Transfer of Well Permit or Registration

<b>TRANSFER FROM</b>		<b>TRANSFER TO</b>	
Name	OGO#	Name	OGO#
T.W. PHILLIPS GAS AND OIL CO. 12913		T.W. PHILLIPS GAS SUPPLY CORP.	
<b>WELLS TO BE TRANSFERRED</b>			

DEP Permit/Reg # USE (Well API #)	County	Municipality	Farm Name	DEP Name (Co. Name)	Well No.	Proj/ Ser #
063 21070	Indiana	White	HENRY TELTHORSTER	(Telthorster, Henry #1 118A)	#1	#1
063 21827	Indiana	White	HENRY TELTHORSTER	(Telthorster, Henry #2 118A)	#2	#2
063 21857	Indiana	White	HENRY TELTHORSTER	(Telthorster, Henry #3 118A)	#3	#3
063 21600	Indiana	White	LUTHER S WILLIAMS	(Williams, Luther S. #1 80A)	#1	#1
063 20225	Indiana	Young	HARRY COLEMAN	(Coleman, Harry #1 721A)	#1	#1
063 20433	Indiana	Young	JOHN A. CRIBBS	(Cribbs, John A. #1 140A)	#1	#1
063 20062	Indiana	Young	HAPPY ACRES	(Dean, E. A. #2 150A)	#2	#2
063 20682	Indiana	Young	DENISE COAL	(Denise Coal Co. #2 210A)	#2	#2
063 20075	Indiana	Young	GEORGE DOTTS	(Dotts, George #1 140A)	#1	#1
063 20101	Indiana	Young	GEORGE DOTTS & SHROKMAN	(Dotts-Shrokman #1 144A)	#1	#1
063 22747	Indiana	Young	FAILS & FAILS	(Fails & Fails #1 104A)	#1	#1
063 20663	Indiana	Young	WILLIAM A. GALLAGHER	(Gallagher, W. #1 40A)	#1	#1
063 23083	Indiana	Young	HELEN O LYONS	(Graham, Laura #1 100A)	#1	#1
063 21605	Indiana	Young	R & P COAL COMPANY	(Helvetia Coal Mining Co. #8 828A)	#8	#8
063 00110	Indiana	Young	HELVETIA COAL MINING	(Helvetia Coal Mining Co. #9 828A)	#9	#9
063 21598	Indiana	Young	ANDREW HOLODNIK	(Holodnik, A. Jr. #1 100A)	#1	#1
063 21633	Indiana	Young	ANDREW HOLODNIK	(Holodnik, A. Jr. #2 100A)	#2	#2
063 20689	Indiana	Young	FRANK MICHELOTTI	(Michelotti, Frank #1 50A)	#1	#1
063 22383	Indiana	Young	T W PHILLIPS GAS & OIL	(Neal & T. W. P. #1 43A)	#1	#1
063 22543	Indiana	Young	T W PHILLIPS GAS & OIL	(Neal & T. W. P. #2 43A)	#2	#2
063 20012	Indiana	Young	T W PHILLIPS	(Neal & T. W. P. #3 499A)	#3	#3
063 20157	Indiana	Young	T W PHILLIPS GAS & OIL	(Neal & T. W. P. #4 499A)	#4	#4
063 23325	Indiana	Young	R & P COAL	(R. & P. Coal Co. #1 70A)	#1	#1
063 23437	Indiana	Young	R & P COAL	(R. & P. Coal Co. #1 215A)	#1	#1
063 20019	Indiana	Young	SARA S RAINES & SARA E KING	(Raines & King #1 100A)	#1	#1
063 20908	Indiana	Young	W A SCHROTH	(Schroth, W. A. #1 197A)	#1	#1
063 20321	Indiana	Young	EDWARD T WIESMANN	(Weismann, E. T. #1 92A)	#1	#1
065 00264	Jefferson	Beaver	LIDA AMES 42A	(Ames, Lida #1 42A)	#1	#1
065 21551	Jefferson	Beaver	CHARLES AMES	(Ames, Walter #1 100A)	#1	#1
065 00267	Jefferson	Beaver	BROOKVILLE BANK & TRUST CO	110A (Brookville, B & T Co. #2 110A)	#2	#2
065 00268	Jefferson	Beaver	BROOKVILLE BANK & TRUST CO	110A (Brookville, B & T Co. #3 110A)	#3	#3
065 00265	Jefferson	Beaver	O C BAUGHMAN	(Baughman, O. C. #1 74A)	#1	#1
065 00275	Jefferson	Beaver	G R DINGER 37A	(Dinger, Gilbert R. #1 37A)	#1	#1
065 00276	Jefferson	Beaver	ANDREW GEIST SR	159A (Geist, Andrew Sr. #1 159A)	#1	#1
065 00282	Jefferson	Beaver	JACOB HOPKINS 306A	(Hopkins, Jacob #2 306A)	#2	#2
065 00283	Jefferson	Beaver	JACOB HOPKINS 306A	(Hopkins, Jacob #3 306A)	#3	#3
065 00284	Jefferson	Beaver	W V HUBER	(Huber, W. V. #1 48A)	#1	#1
065 00291	Jefferson	Beaver	FREITZ 75A	(Reitz, Frances #1 75A)	#1	#1
065 21250	Jefferson	Beaver	SA & FLORENCE COPENHAVER FMYL J R S	(Schreckengost, J. R. #1 80 #1	#1	#1
065 00292	Jefferson	Beaver	CR SCHWAB	(Schwab, C. R. #1 52A)	#1	#1
065 00296	Jefferson	Beaver	R SOWERS 73A	(Sowers, Robert #1 73A)	#1	#1

Page 20 of 29

DEP USE ONLY	Initial (DEP R.P.M. or other)
	SC2 1/1/07

RECEIVED

DEC 26 2006

NOV 20 2006  
DEP, SOUTHWEST REGION  
OIL & GAS



Application for Transfer of Well Permit or Registration

<b>TRANSFER FROM</b>		<b>TRANSFER TO</b>	
Name	OGO#	Name	OGO#
T.W. PHILLIPS GAS AND OIL CO. 12913		T.W. PHILLIPS GAS SUPPLY CORP.	
<b>WELLS TO BE TRANSFERRED</b>			

DEP Permit/Reg # USE (Well API #)	County	Municipality	Farm Name	DEP Name (Co. Name)	Well No.	Prof/ Ser #
065 00298	Jefferson	Beaver	T A SPARE (Spare, T. A. #1 52A)		#1	
065 20747	Jefferson	Bell	PAUL ARMSTRONG & JOHN D EIMHOFF (Armstrong & Eimhoff #1 70A)		#1	
065 20682	Jefferson	Bell	BUFFALO & SUSQUEHANNA COAL&COKE (B & S Coal & Coke Co. #1 93		#1	
065 20760	Jefferson	Bell	OSCAR C BENSON (Benson & Benson #1 12A)		#1	
065 20618	Jefferson	Bell	GEORGE & HELEN FREDERICK (Brown, P. Lot #1 437A)		#1	
065 20547	Jefferson	Gaskill	BUFFALO & SUSQUEHANNA COAL & COKE (B & S Coal & Coke Co. #1-8		#1	
065 20573	Jefferson	Gaskill	PAULA BOWERS ATTY IN FACT (Bowers, G. E. #1 168A)		#1	
065 20671	Jefferson	Gaskill	MARION R BOWSER (Bowser, Marion R. #1 57A)		#1	
065 20728	Jefferson	Gaskill	PAUL W & JEANETTE CRAFT (Craft, Paul & Jeanette #1 53A)		#1	
065 20571	Jefferson	Gaskill	ROBERT & MARGARET GRAHAM (Graham, Robert C. #1 60A)		#1	
065 20525	Jefferson	Gaskill	CHARLES H IRVIN (Irvin, C. H. #1 44A)		#1	
065 20504	Jefferson	Gaskill	MCNEIL (McNeil, S. F. #1 64A)		#1	
065 20670	Jefferson	Gaskill	J D STATES (States, J. D. #1 85A)		#1	
065 20729	Jefferson	Gaskill	J D STATES (States, J. D. #2 85A)		#2	
065 21238	Jefferson	Gaskill	CLYDE R STRAWCUTTER (Strawcutter, C. R. #1 35A)		#1	
065 21209	Jefferson	Gaskill	George A White 1 (White, George A. #1 44A)		#1	
065 20761	Jefferson	Gaskill	ETHEL M GASTON (White, George A. #2 44A)		#2	
065 21661	Jefferson	Knox	JOHN B GARVEY (Garvey, J. B. #1 10A)		#1	
065 00208	Jefferson	Knox	HOMER D KNAPP (Knapp, Homer D. #1 24A)		#1	
065 00209	Jefferson	Knox	DALE C MILLER (Miller, D. C. #1 65A)		#1	
065 00210	Jefferson	Knox	DALE C MILLER (Miller, D. C. #3 65A)		#3	
065 20183	Jefferson	Knox	JAMES E STRAITWELL (Straitwell, John #1 25A)		#1	
065 00241	Jefferson	McCalmont	D A BROWN (Brown, D. J. #1 45A)		#1	
065 20182	Jefferson	McCalmont	M S T H BROWN (Brown, T. H. #1 128A)		#1	
065 21953	Jefferson	McCalmont	FRANK T BELL FMYL J T HORNER (Horner, J. T. #1 60A)		#1	
065 22063	Jefferson	McCalmont	J DONALD WARGO EXP REST OF JOHN M WARGO (Kepler & May #8 595		#8	
065 21068	Jefferson	McCalmont	CARL & FLORENCE MCGEE (McGee, James H. #2 1A)		#2	
065 00248	Jefferson	McCalmont	C H RHODES (Rhodes, C. H. #1 24A)		#1	
065 00249	Jefferson	McCalmont	GEORGE SEFCIK 7A (Sefcik, Gorg #1 7A)		#1	
065 20187	Jefferson	McCalmont	J LYNN & D STRAITWELL (Straitwell, D. M. #2 244A)		#2	
065 00250	Jefferson	McCalmont	B E THOMAS (Thomas, B. E. #1 4A)		#1	
065 21545	Jefferson	McCalmont	JESSE P LONG AGT FMYL R C WINSLOW (Winslow, R. C. #85 100A)		#85	
065 00261	Jefferson	McCalmont	R C WINSLOW 6100A48A (Winslow, R. C. #41 6100A)		#41	
065 20557	Jefferson	McCalmont	JESSE P LONG (Winslow, R. C. #44 6100A)		#44	
065 00263	Jefferson	McCalmont	R C WINSLOW (Winslow, R. C. #49 6100A)		#49	
065 21295	Jefferson	Oliver	BARILAR COAL (Barilar Coal Co. Inc. #1 216A)		#1	
065 21062	Jefferson	Oliver	BARILAR COAL (Barilar Coal Co. Inc. #2 216A)		#2	
065 00215	Jefferson	Oliver	BROSIOUS & ENTERLINE (Brosius & Enterline #2 150A)		#2	
065 00216	Jefferson	Oliver	BROSIOUS & ENTERLINE (Brosius & Enterline #3 150A)		#3	
065 00217	Jefferson	Oliver	I F BURKETT (Burket, I. F. #1 84A)		#1	
065 20566	Jefferson	Oliver	JOSEPH SHAFFER -CALDERWOOD & WINSLOW (Calderwood & Winslow		#1	

Page 21 of 29

DEP USE ONLY	Initial (DEP R.P.M. or other)
	SC2 1/8/07

RECEIVED

DEC 26 2006

NOV 20 2006  
DEP. SOUTHWEST REGION  
OIL & GAS

ENVIRONMENTAL PROTECTION  
NORTHWEST REGIONAL OFFICE



Application for Transfer of Well Permit or Registration

<b>TRANSFER FROM</b>		<b>TRANSFER TO</b>	
Name	OGO#	Name	OGO#
T.W. PHILLIPS GAS AND OIL CO. 12913		T.W. PHILLIPS GAS SUPPLY CORP.	

**WELLS TO BE TRANSFERRED**

DEP Permit/Reg #

USE (Well API#)	County	Municipality	Farm Name DEP Name (Co. Name)	Well No. Ser #	Proj/ Ser #
065 20548	Jefferson	Oliver	COCHRAN (Cochran, Alex #2 125A)	#2	
065 00224	Jefferson	Oliver	JAMES HAWTHORNE (Hawthorne, James #1 120A)	#1	
065 00225	Jefferson	Oliver	S.S. JORDAN (Jordan, S. S. #1 200A)	#1	
065 20207	Jefferson	Oliver	BERNARD KUNSELMAN (Kunselman, F. L. #1 80A)	#1	
065 00231	Jefferson	Oliver	ANNIE MOSER (Moser, Annie L. #1 80A)	#1	
065 00233	Jefferson	Oliver	CHARLES MOTTEN (Mottin, Charles #1 120A)	#1	
065 21108	Jefferson	Oliver	CHRISTINE V PALMER (Palmer, Christine V. #1 35A)	#1	
065 00237	Jefferson	Oliver	G A PIFER (Pifer, G. A. #3 384A)	#3	
065 00238	Jefferson	Oliver	D. SEILER (Seiler, Daniel #1 101A)	#1	
065 21550	Jefferson	Oliver	RICHARD R & LOIS A STANFORD (Spano, Dick & Frances #1 25A)	#1	
065 20568	Jefferson	Oliver	W R & L E STARTZELL (Startzell, Sara A. #1 44A)	#1	
065 20482	Jefferson	Perry	ADAIR & KUNTZ (Adair & Kuntz #1 86A)	#1	
065 00351	Jefferson	Perry	PETER ANDERSON (Anderson, Peter #1 23A)	#1	
065 00352	Jefferson	Perry	M A ANTHONY (Anthony, M. A. #1 44A)	#1	
065 21189	Jefferson	Perry	HARMON MINING (Black E., & McMillen, M. #1 72A)	#1	
065 21034	Jefferson	Perry	H G REED (Blöse, David M. #1 420A)	#1	
065 00353	Jefferson	Perry	D M BLOSE (Blöse, David M. #3 420A)	#3	
065 20363	Jefferson	Perry	H G REED (Blöse, David M. #5 420A)	#5	
065 00355	Jefferson	Perry	G A BLOSE 90AA (Blöse, G. A. #3 90A)	#3	
065 00356	Jefferson	Perry	G A BLOSE (Blöse, G. A. #4 90A)	#4	
065 00103	Jefferson	Perry	OLLIE BLOSE (Blöse, Ollie #1 32A)	#1	
065 00358	Jefferson	Perry	M B BROSIUS 90A 32A (Brosius, M. B. #2 90A)	#2	
065 20479	Jefferson	Perry	S S & N Z GEESEY -F.M.Y. ARAMINTA C BUSH (Bush, Araminta C. #2 85A)	#2	
065 00360	Jefferson	Perry	J G BUSH (Bush, J. G. #1 59A)	#1	
065 20502	Jefferson	Perry	ELIZABETH & JOHN WOOVER (Croasman, M. A. #2 188A)	#2	
065 00361	Jefferson	Perry	WADE R DEPP (Depp, Wade R. #1 240A)	#1	
065 00427	Jefferson	Perry	W R DEPP 2 (Depp, Wade R. #2 240A)	#2	
065 21888	Jefferson	Perry	CLYDE K MOHNEY F.M.Y. J H DILTS (Dilts, J. H. (Monney) #2 100A)	#2	
065 00362	Jefferson	Perry	F C DOUTHETT (Douthett, F. C. #2 72A)	#2	
065 00363	Jefferson	Perry	C K GAHAGAN (Gahagan, C. K. #4 260A)	#4	
065 00366	Jefferson	Perry	C GOURLEY (Gourley, Crawford #1 53A)	#1	
065 00367	Jefferson	Perry	C GOURLEY 53A105A (Gourley, Crawford #2 53A)	#2	
065 20933	Jefferson	Perry	M C MILLIRON F.M.Y. D F GOURLEY (Gourley, D. F. #3 150A)	#3	
065 00369	Jefferson	Perry	DAVID A HAMILTON (Hamilton, David A. #5 640A)	#5	
065 00370	Jefferson	Perry	DAVID A HAMILTON (Hamilton, David A. #6 640A)	#6	
065 00374	Jefferson	Perry	ROBERT HAMILTON (Hamilton, Robert #1 170A)	#1	
065 00375	Jefferson	Perry	N J HAZLETT (Hazlett, James N. #1 88A)	#1	
065 00379	Jefferson	Perry	HUMBLE HEIRS 100A (Heirs, Humble #1 100A)	#1	
065 22995	Jefferson	Perry	W L HENRY 190A (Henry, W. L. #2 190A)	#2	
065 00378	Jefferson	Perry	D F HUMBLE (Humble, D. F. #2 127A)	#2	
065 00380	Jefferson	Perry	M M JORDAN (Jordan, Mrs. Minnie M. #1 72A)	#1	

DEP USE ONLY	Initial (DEP R.P.M. or other)
	SCA 1/3/07

ENVIRONMENTAL PROTECTION  
NORTHWEST REGIONAL OFFICE

DEP, SOUTHWEST REGION  
OIL & GAS

DEC 26 2006

NOV 20 2006

RECEIVED



Application for Transfer of Well Permit or Registration

<b>TRANSFER FROM:</b>		<b>TRANSFER TO:</b>	
Name	OG#	Name	OG#
T.W. PHILLIPS GAS AND OIL CO. 12913		T.W. PHILLIPS GAS SUPPLY CORP.	
<b>WELLS TO BE TRANSFERRED</b>			

DEP Permit/Reg # USE (Well API #)	County	Municipality	Farm Name	DEP Name (Co. Name)	Well No.	Proj/ Ser #
065 00381	Jefferson	Perry	J N KELLY	(Kelly, J. N. #1 42A)	#1	#1
065 20172	Jefferson	Perry	JOHN G KELLY	(Kelly, J. N. #1 200A)	#1	#1
065 00382	Jefferson	Perry	J N KELLY	(Kelly, J. N. #2 200A)	#2	#2
065 00383	Jefferson	Perry	J N KELLY	(Kelly, J. N. #3 200A)	#3	#3
065 00384	Jefferson	Perry	J KUNTZ	(Kuntz, Jacob Hrs #1 100A)	#1	#1
065 20167	Jefferson	Perry	HAROLD BROSIGUS	(Lewis, H.A. #1-4A)	#1	#1
065 21967	Jefferson	Perry	WALTER E & BERNICE C BULLERS	FMLY LEWIS (Lewis, J. H. #2 126A)	#2	#2
065 00386	Jefferson	Perry	W L MAUK	(Mauk, W. L. #2 107A)	#2	#2
065 00398	Jefferson	Perry	J C MCCARTNEY	(McCartney, John C. #1 44A)	#1	#1
065 00399	Jefferson	Perry	ANNIE MCGEE	(McGee, Heirs (Annie) #1 49A)	#1	#1
065 00402	Jefferson	Perry	M MCGEE	(McGee, Malissa #1 40A)	#1	#1
065 00389	Jefferson	Perry	MEANS & STRAITIFF	(Means & Straitiff #1 144A)	#1	#1
065 00388	Jefferson	Perry	L V MEANS	(Means, L. V. #1 80A)	#1	#1
065 20450	Jefferson	Perry	J H & M E HETRICK	(Meneely, L. H. #2 48A)	#2	#2
065 00390	Jefferson	Perry	LAURA H MILLER	(Miller, Laura H. #1 75A)	#1	#1
065 00391	Jefferson	Perry	C V MILLIRON	(Milliron, C.V. #1 104A)	#1	#1
065 20185	Jefferson	Perry	JOHN C NEWBOLD	(FMLY C V MILLIRON) (Milliron, C.V. #2 104A)	#2	#2
065 00392	Jefferson	Perry	MITCHELL & MCCARTNEY	128A (Mitchell - McCartney #2 128A)	#2	#2
065 20199	Jefferson	Perry	JOHN C NEWBOLD	(Mitchell, C. E. #3 100A)	#3	#3
065 20528	Jefferson	Perry	CLAIR & ELSIE B GEIST	-FMLY G L MITCHELL (Mitchell, G. L. #1 87A)	#1	#1
065 00394	Jefferson	Perry	J A MITCHELL	150A (Mitchell, J. G. #1 150A)	#1	#1
065 00395	Jefferson	Perry	JAY M MITCHELL	(Mitchell, Jay M. #3 175A)	#3	#3
065 00396	Jefferson	Perry	SARAH E MITCHELL	(Mitchell, Sarah E. #1 80A)	#1	#1
065 20173	Jefferson	Perry	ANNIE L MOSER & CARL SELLER	(Moser & Sellar #2 100A)	#2	#2
065 00397	Jefferson	Perry	ORAN L MOSER	(Moser, Oran L. #1 51A)	#1	#1
065 20177	Jefferson	Perry	DELLA A NEAL EST	FMLY JAMES NEAL (Neal, Heirs #2 97A)	#2	#2
065 00404	Jefferson	Perry	JACK NEALE	(Neale, Jack #1 58A)	#1	#1
065 00405	Jefferson	Perry	ORIN L NEEL	(Neel, Orin Lee #3 218A)	#3	#3
065 20694	Jefferson	Perry	NEWCOMB	(Newcomb, #3-146A)	#3	#3
065 00409	Jefferson	Perry	D B POSTLEWAITE ET AT	132A (Postlewaite, D. B. #2 132A)	#2	#2
065 20556	Jefferson	Perry	WALTER & WOODROW MOSIER	(Raybuck, Jesse #1 40A)	#1	#1
065 00410	Jefferson	Perry	J RAYBUCK	98A (Raybuck, Jesse #1 98A)	#1	#1
065 00411	Jefferson	Perry	P L REED	(Reed, P. L. #1 80A)	#1	#1
065 20413	Jefferson	Perry	WM B MEANS	-FMLY ELIZABETH RHODES (Rhoads, Elizabeth #1 100A)	#1	#1
065 20203	Jefferson	Perry	CALVIN SHAFFER	(Shaffer, Calvin #2 140A)	#2	#2
065 00412	Jefferson	Perry	W C J C & J D SHAFFER	(Shaffer, W.C., J.C., & J.D. #1 105A)	#1	#1
065 00413	Jefferson	Perry	W C J C & J D SHAFFER	105A (Shaffer, W.J., J.C., & J.D. #2 105A)	#2	#2
065 00414	Jefferson	Perry	R H SHEESLEY	(Sheesley, R. H. #1 50A)	#1	#1
065 00416	Jefferson	Perry	B E SMITH	(Smith, B.E. #2 146A)	#2	#2
065 21012	Jefferson	Perry	HAROLD W SMITH	(Smith, David L. #1 118A)	#1	#1
065 00417	Jefferson	Perry	ESTELLA SMITH	10A (Smith, Estella #1 10A)	#1	#1

RECEIVED

NOV 20 2006  
DEC 26 2006  
DEP, SOUTHWEST REGION  
OIL & GAS  
ENVIRONMENTAL PROTECTION  
NORTHWEST REGIONAL OFFICE

Page 23 of 29

DEP USE ONLY	Initial (DEP R.P.M. or other)
	SCA 1/3/07



Application for Transfer of Well Permit or Registration

<b>TRANSFER GROVE</b>		<b>TRANSFER TO</b>	
Name	OGO#	Name	OGO#
T.W. PHILLIPS GAS AND OIL CO. 12913		T.W. PHILLIPS GAS SUPPLY CORP.	
<b>WELLS TO BE TRANSFERRED</b>			

DEP Permit/Reg #

USE (Well API #)	County	Municipality	Farm Name DEP Name (Co. Name)	Well No. Ser #	Prof/ Ser #
065 00418	Jefferson	Perry	IRVIN SMITH (Smith, Irvin C. #1 60A)	#1	#1
065 22422	Jefferson	Perry	L T SMITH (Smith, L. T. #1 55A)	#1	#1
065 00420	Jefferson	Perry	WM & SARA C SMITH (Smith, W.M. & Sara #1 65A)	#1	#1
065 00421	Jefferson	Perry	D B SPRANKLE 140A (Sprankle, D. B. #2 140A)	#2	#2
065 22526	Jefferson	Perry	J C SPRANKLE (Sprankle, J. C. #1 200A)	#1	#1
065 00422	Jefferson	Perry	J C SPRANKLE 200A (Sprankle, J.C. #2 200A)	#2	#2
065 00423	Jefferson	Perry	P STAHLMAN (Stahman, Paul H. #1 60A)	#1	#1
065 00424	Jefferson	Perry	S L STEWART (Stewart, S. L. #1 116A)	#1	#1
065 00425	Jefferson	Perry	S L STEWART (Stewart, S. L. #2 116A)	#2	#2
065 00426	Jefferson	Perry	H STUNKARD (Stunkard, Harry #3 191A)	#3	#3
065 00407	Jefferson	Perry	(ANTHONY) T W P G & O CO (T. W. P. & Neal-Anthony #3 180A)	#3	#3
065 00408	Jefferson	Perry	(ANTHONY) T W P G & O CO 180A (T. W. P. & Neal-Anthony #4 180A)	#4	#4
065 20325	Jefferson	Perry	T W PHILLIPS GAS & OIL -POSTLEWAITE (T. W. P. & Postlewaite #1 36A)	#1	#1
065 20430	Jefferson	Perry	JAMES E TODD (Todd, J. E. #2 152A)	#2	#2
065 20510	Jefferson	Perry	JAMES E TODD (Todd, J. E. #3 152A)	#3	#3
065 00428	Jefferson	Perry	H E TRAVIS (Travis, H. E. #1 80A)	#1	#1
065 00429	Jefferson	Perry	GEO WEAVER (Weaver, George #2 60A)	#2	#2
065 00431	Jefferson	Perry	S R WHITESELL (Whitesell, S. R. #1 14A)	#1	#1
065 20280	Jefferson	Perry	ROBERT G STEIMER (H YOUNG)L Young, L.H. #1 114A)	#1	#1
065 20835	Jefferson	Perry	HI-LO ACRES FRLY I H YOUNG (Young, I. H. #2 114A)	#2	#2
065 20948	Jefferson	Perry	LEONARD N GROVE ET AL FMLY J A YOUNG (Young, J. A. #2 160A)	#2	#2
065 00432	Jefferson	Perry	LILLY YOUNG (Young, Lilly #1 5A)	#1	#1
065 20984	Jefferson	Porter	MERLE COLEMAN AGT ET AL FMLY ELIZABE (Adams, Elizabeth #1 117A)	#1	#1
065 20985	Jefferson	Porter	MERLE COLEMAN AGT ET AL FMLY ELIZABE (Adams, Elizabeth #2 117A)	#2	#2
065 00314	Jefferson	Porter	ELIZABETH ADAMS 117A (Adams, Elizabeth #3 117A)	#3	#3
065 00315	Jefferson	Porter	R R ADAMS 160AS 117A (Adams, R. R. #2 160A)	#2	#2
065 20389	Jefferson	Porter	ORMAN & MARGARET BISH -FMLY D S BISH (Bish, D. S. #1 54A)	#1	#1
065 20101	Jefferson	Porter	ORMAN A BISH (Bish, D. S. #2 54A)	#2	#2
065 00316	Jefferson	Porter	GEORGE E BISH 100A (Bish, George E. #1 100A)	#1	#1
065 00317	Jefferson	Porter	JAMES I BULLERS 63A (Bullers, James I. #1 63A)	#1	#1
065 00318	Jefferson	Porter	JAMES 2 BULLERS (Bullers, James I. #1 88A)	#1	#1
065 21556	Jefferson	Porter	UNITED INDUSTRIES FMLY CHARMALT (Carmalt & Burns #2 120A)	#2	#2
065 00323	Jefferson	Porter	CARMALT & BURNS 120A (Carmalt & Burns #3 120A)	#3	#3
065 00324	Jefferson	Porter	H A CORBETT (Corbett, H. A. #2 450A)	#2	#2
065 20256	Jefferson	Porter	ALICE R & TWILA M DOAK ATTYS IN FACT (Doak, David #1 170A)	#1	#1
065 20444	Jefferson	Porter	ALICE R & TWILA M DOAK ATTYS IN FACT (Doak, David #2 170A)	#2	#2
065 00325	Jefferson	Porter	E DOBSON 42A (Dobson, Elmer #1 42A)	#1	#1
065 20249	Jefferson	Porter	C. E. ELKIN (Elkin, C. E. #1 200A)	#1	#1
065 20332	Jefferson	Porter	CLARA & CLYDE FREEDLINE (Freedline, Clyde #1 69A)	#1	#1
065 20452	Jefferson	Porter	B H FULTON (Fulton, B. H. #1 110A)	#1	#1
065 20259	Jefferson	Porter	B H FULTON (Fulton, B. H. #2 110A)	#2	#2

DEP USE ONLY

Initial (DEP  
R.P.M. or other)

SCA 1/8/07

RECEIVED

DEC 26 2006

NOV 20 2006

DEF. SOUTHWEST REGION  
OIL & GAS  
ENVIRONMENTAL PROTECTION  
NORTHWEST REGIONAL OFFICE



Application for Transfer of Well Permit or Registration

<b>TRANSFER FROM</b>		<b>TRANSFER TO</b>	
Name	OGO#	Name	OGO#
T.W. PHILLIPS GAS AND OIL CO. 12913		T.W. PHILLIPS GAS SUPPLY CORP.	

**WELLS TO BE TRANSFERRED**

DEP Permit/Reg # USE (Well API#)	County	Municipality	Farm Name	DEP Name (Co. Name)	Well No.	Proj/ Ser #
065 00327	Jefferson	Porter	EARL T GAHAGAN	(Gahagan, Earl T. #1 88A)	#1	
065 20445	Jefferson	Porter	GUTHRIE	(Guthrie & Howard #2 84A)	#2	
065 00330	Jefferson	Porter	C K HAWTHORNE	215A (Hawthorne, C. K. #2 215A)	#2	
065 21197	Jefferson	Porter	JAMES I & MARTHA BULLERS	(Hess, H. C. #1 176A)	#1	
065 00331	Jefferson	Porter	H C HESS	176A (Hess, H. C. #3 176A)	#3	
065 00332	Jefferson	Porter	H C HESS	176A (Hess, H. C. #4 176A)	#4	
065 20456	Jefferson	Porter	HUMBLE-DOAK	(Humble-Doak, Jt #1 170A)	#1	
065 20337	Jefferson	Porter	PATRICK M & JOHN C KENNEDY	(Kennedy, P.M. & J.C. #1 44A)	#1	
065 00333	Jefferson	Porter	BODY & ANNIE KUNSELMAN	71A (Kunselman, Boyd & Annie #1 71A)	#1	
065 00336	Jefferson	Porter	J E LANTZ	(Lantz, J.E. Heirs #1 160A)	#1	
065 00340	Jefferson	Porter	E MARSH	(Marsh, Elmer #1 170A)	#1	
065 00341	Jefferson	Porter	E MARSH ET AL	170A (Marsh, Elmer #2 170A)	#2	
065 20722	Jefferson	Porter	RINGGOLD MINES	FMLY ELMER MARSH (Marsh, Elmer #3 170A)	#3	
065 20208	Jefferson	Porter	R D T COAL	(Maxwell, William R. #1 54A)	#1	
065 20122	Jefferson	Porter	PAUL McDONALD	(McDonald, T. M. #2 144A)	#2	
065 00344	Jefferson	Porter	D C MCGREGOR	235A (McGregor, D. C. #2 235A)	#2	
065 00345	Jefferson	Porter	W T MCGREGOR	(McGregor, W. T. #1 50A)	#1	
065 20774	Jefferson	Porter	BOYD C & JANET L ELKIN	-FMLY W T M (Miller, W. T. #1 42A)	#1	
065 20785	Jefferson	Porter	MERLE & HAZEL COLEMAN	-FMLY FREEMA (Powell, Freeman #1 55A)	#1	
065 20956	Jefferson	Porter	LLOYD LINGENFELTER	FMLY WALTER D P (Powell, Walter D. #2 72A)	#2	
065 21559	Jefferson	Porter	DONALD E AND DOROTHY E COLEMAN	FMLY SCHR (Schrock, J. J. #1 2 #1	#1	
065 20689	Jefferson	Porter	ETHEL PORT CULBERTSON	-J J SCHROCK (Schrock, J. J. #1 87A)	#1	
065 20690	Jefferson	Porter	ETHEL PORT CULBERTSON	-J J SCHROCK (Schrock, J. J. #2 87A)	#2	
065 21271	Jefferson	Porter	ROBERT J PETRILLA	FMLY B F SHAFFER (Shafer, B. F. #1 140A)	#1	
065 21360	Jefferson	Porter	JOHN M & GRACE E HOLLENBAUGH	(Snyder, E. C. #2 80A)	#2	
065 00348	Jefferson	Porter	S P STAHLMAN	54A (Stahlman, S. P. #1 54A)	#1	
065 20331	Jefferson	Porter	C S STEAR	(Stear, D. H. #3 120A)	#3	
065 00349	Jefferson	Porter	C & J WATT	35A4A (Watt, Chas. & James #1 35A)	#1	
065 20410	Jefferson	Ringgold	H E KING	(Bodorf, M. E. #1 88A)	#1	
065 21705	Jefferson	Ringgold	ERNIE M COLEMAN	(Dinger, H. L. #1 200A)	#1	
065 21548	Jefferson	Ringgold	ERNIE M COLEMAN	FMLY H L DINGER (Dinger, H. L. #2 200A)	#2	
065 21272	Jefferson	Ringgold	CLAIR <del>AND ROBERT</del> POWELL	FMLY W E S (Shoffner, W. E. #1 105A)	#1	
065 20379	Jefferson	Ringgold	FRANK W & GERALDINE A MARTZ	(Stahlman, Jacob #2 65A)	#2	
065 00313	Jefferson	Ringgold	J H STORMER	80A (Stormer, J. H. #1 61A)	#1	
065 20519	Jefferson	Rose	GOLDIE MCKINLEY	CLEMENTS FMLY C J M (McKinley, C. J. #3 70A)	#3	
065 00171	Jefferson	Union	LAVINIA MOORE	(Moore, Lavina #2 141A)	#2	
065 00193	Jefferson	Warsaw	S M BARTLETT	(Bartlett, S. M. #2 90A)	#2	
065 21924	Jefferson	Warsaw	PAUL H HAUGH	FMLY W R MCCORACKEN (McCracken, W. R. #1 42A)	#1	
065 00199	Jefferson	Warsaw	M S STEPHENS	(Stephens, M. S. #1 40A)	#1	
065 00179	Jefferson	Winslow	MRS F E HANNAH	134A (Hannah, F. E. #1 134A)	#1	
065 00180	Jefferson	Winslow	JOHN B HENERY	(Henery, John B. #1 127A)	#1	

Page 25 of 29

DEP USE ONLY	Initial (DEP R.P.M. or other)
	SC2 1/3/07

ENVIRONMENTAL PROTECTION  
DEPARTMENT REGIONAL OFFICE  
OIL & GAS

DEC 26 2006

NOV 20 2006

RECEIVED



Application for Transfer of Well Permit or Registration

<b>TRANSFER FROM</b>		<b>TRANSFER TO</b>	
Name	OGO#	Name	OGO#
T.W. PHILLIPS GAS AND OIL CO. 12913		T.W. PHILLIPS GAS SUPPLY CORP.	
<b>WELLS TO BE TRANSFERRED</b>			

DEP Permit/Reg #	County	Municipality	Farm Name	DEP Name (Co. Name)	Well No.	Prof/ Ser #
065 00182	Jefferson	Winslow	S J & ELLA H MARLIN (Marlin, S. J. & Ella #2 160A)		#2	
065 21052	Jefferson	Winslow	HENRY NORRIS (Norris, A. M. #1 125A)		#1	
065 22991	Jefferson	Winslow	WILLIAM SPENCER (Norris, R. E. #2 156A)		#1	
065 20317	Jefferson	Winslow	JAMES E PIERCE (Pierce, James E. #1 75A)		#1	
065 00186	Jefferson	Winslow	ROCHESTER & PGH COAL (R. & P. Coal Co. #10 2320A)		#10	
065 20276	Jefferson	Winslow	ROCHESTER & PITTSBURGH COAL (R. & P. Coal Co. #2 2320A)		#2	
065 20277	Jefferson	Winslow	ROCHESTER & PITTSBURGH COAL (R. & P. Coal Co. #6 2320A)		#6	
065 00185	Jefferson	Winslow	ROCHESTER & PGH COAL (R. & P. Coal Co. #9 2320A)		#9	
065 20517	Jefferson	Winslow	JOSEPH A. & ELIZ M BOBAL (Shaffer, Dennis R. #1 100A)		#1	
065 00187	Jefferson	Winslow	D R SHAFFER (Shaffer, Dennis R. #2 100A)		#2	
065 00189	Jefferson	Winslow	NORMAN SPRAGUE (Sprague, Norman #1 108A)		#1	
065 00191	Jefferson	Winslow	SYPHRIT & SHAFFER (Syphrit & Shaffer #1 100A)		#1	
065 00190	Jefferson	Winslow	S T SYPHRIT (Syphrit, Samuel Thomas #1 100A)		#1	
065-20660	Jefferson	Young	<del>WILLIAM B BENSON (Benson, William B. #1 20A)</del>		#1	
065 21409	Jefferson	Young	SARAH B BOWERS (Bowers, Sarah B. #1 60A)		#1	
065 21410	Jefferson	Young	SARAH B BOWERS (Bowers, Sarah B. #2 60A)		#2	
065 20222	Jefferson	Young	C C CAMPBELL (Campbell, C. #1 125A)		#1	
065 20421	Jefferson	Young	VADA BULLERS (Campbell, C. #2 125A)		#2	
065 20755	Jefferson	Young	BLAKE I & DOROTHY M MOHNEY (Caylor, J.E. #1 128A)		#1	
065 20748	Jefferson	Young	BLAKE I & DOROTHY M MOHNEY (Caylor, J.E. #2 128A)		#2	
065 21106	Jefferson	Young	JOSEPH DEFELICE (Defelice, J.Sr. #1 81A)		#1	
065 20692	Jefferson	Young	GROVER A HAAG (Haag, G.A. #1 20A)		#1	
065 20404	Jefferson	Young	GROVER A HAAG (Haag, G.A. #2 117A)		#2	
065 20436	Jefferson	Young	GROVER A HAAG (Haag, G.A. #3 117A)		#3	
065 00434	Jefferson	Young	JOHNSON & OLGREN (Johnson & Olgren #1 50A)		#1	
065 20857	Jefferson	Young	JAMES COWAN (Lantz, Eli #2 119A)		#2	
065 21061	Jefferson	Young	ANDREW W HUDOCK (Lewis, H.H. #1 21A)		#1	
065 20351	Jefferson	Young	HARRY N & WM KROMER-L M LEWIS (Lewis, L.M. #1 260A)		#1	
065 00436	Jefferson	Young	L M LEWIS (Lewis, L.M. #3 260A)		#3	
065 20465	Jefferson	Young	FLORENCE E & CARL HAINES (Lorenzo, A. #4 148A)		#4	
065 20691	Jefferson	Young	NELLE RINN & H MARTIN (Martin, H.R. #1 25A)		#1	
065 00437	Jefferson	Young	S MARTZLOFF (Martzloff, S. #1 120A)		#1	
065 20657	Jefferson	Young	LON H MCQUOWN - J C MCQUOWN (McQuown, J.C. #1 109A)		#1	
065 00438	Jefferson	Young	J C MCQUOWN (McQuown, J.C. #2 109A)		#2	
065 00440	Jefferson	Young	C READING 160A (Reading, C. #1 160A)		#1	
065 00441	Jefferson	Young	C READING 160A (Reading, C. #2 160A)		#2	
065 00442	Jefferson	Young	ROCHESTER & PGH COAL CO (Rochester & Pgh Coal Co. #1 80A)		#1	
065 20210	Jefferson	Young	ROCHESTER & PITTSBURGH COAL (Rochester & Pgh Coal Co. #2 80A)		#2	
065 20416	Jefferson	Young	R & P GH COAL (Rochester & Pgh Coal Co. #2 420A)		#2	
065 20435	Jefferson	Young	R & P GH COAL (Rochester & Pgh Coal Co. #3 420A)		#3	
065 20460	Jefferson	Young	R & P GH COAL (Rochester & Pgh Coal Co. #4 420A)		#4	

DEC 26 2006  
JUN 20 2006  
ENVIRONMENTAL PROTECTION  
NORTHWEST REGION  
OIL & GAS  
DEP, SOUTHWEST REGION

RECEIVED

Page 26 of 29

DEFUSION ONLY	Initial (DEP R.P.M. or other)
	SCX 1/8/07



Application for Transfer of Well Permit or Registration

<b>TRANSFER FROM</b>		<b>TRANSFER TO</b>	
Name	OGO#	Name	OGO#
T.W. PHILLIPS GAS AND OIL CO. 12913		T.W. PHILLIPS GAS SUPPLY CORP.	
<b>WELLS TO BE TRANSFERRED</b>			

DEP Permit/Reg # USE (Well API #)	County	Municipality	Farm Name DEP Name (Co. Name)	Well No. Ser #	Proj/
065 00444	Jefferson	Young	ROCHESTER & PGH COAL CO 1064A (Rochester & Pgh Coal Co. #1 1064	#1	
065 20386	Jefferson	Young	R & P COAL (Rochester & Pgh Coal Co. #6 1064A)	#6	
065 21017	Jefferson	Young	CLARENCE M SCHNEIDER (Schneider, C. #1 4A)	#1	
065 00446	Jefferson	Young	J H SMITH 7A (Smith, J.H. #1 7A)	#1	
065 21053	Jefferson	Young	EILEEN BERNSTEIN FMYL C D SNYDER (Snyder, C.D. #1 120A)	#1	
065 00447	Jefferson	Young	C.D-SNYDER F1A1 120A Snyder, C.D. #2 120A	#2	
065 21054	Jefferson	Young	EILEEN BERNSTEIN FAMILY SNYDER (Snyder, C.D. #3 120A)	#3	
065 00439	Jefferson	Young	(FETTERMAN) T W P G & O CO (T.W.P. G.&O. Co. Fetterman #1 4A)	#1	
129 00165	Westmoreland	Allegheny	W H & MARY A CUPPS (Cupps, W.H. & M.A. #1 100A)	#1	
129 00167	Westmoreland	Allegheny	E H NEWELL (Newell, E. H. #1 80A)	#1	
129 00168	Westmoreland	Bell	P E ALMES (Almes, P. E. #1 90A)	#1	
129 20695	Westmoreland	Bell	R D & C J CYPHER (Cypher, R.D. & C.J. #1 74A)	#1	
129 00169	Westmoreland	Bell	FIDELITY TRUST (Fidelity Trust Co. #1 113A)	#1	
129 20118	Westmoreland	Bell	E G HEIMBERGER (Heimberger, E. G. #1 62A)	#1	
129 20523	Westmoreland	Derry	JOSEPH J DENT (Dent, Joseph J. #1 20A)	#1	
129 20337	Westmoreland	Derry	EDWARD A DEVERS (Devers, Edward A. #1 80A)	#1	
129 20533	Westmoreland	Derry	U S A (Kabasta, Mary #1 100A)	#1	
129 20589	Westmoreland	Derry	JAMES L SHEFFLER (Sheffler, J. L. #1 100A)	#1	
129 20370	Westmoreland	Derry	LLOYD P STITT (Stitt, L. P. #1 47A)	#1	
129 20525	Westmoreland	Derry	LLOYD P STITT (Stitt, L. P. #2 47A)	#2	
129 20571	Westmoreland	Derry	TREASURER OF THE UNITED STATES (Treas. Of U.S.A. #1 120A)	#1	
129 00145	Westmoreland	Franklin	C BEATTY (Beatty, Cyrus #1 43A)	#1	
129 00153	Westmoreland	Franklin	F BEIGHLEY (Beighley, Frank #1 134A)	#1	
129 00147	Westmoreland	Franklin	J C COLE (Cole, J. C. #1 104A)	#1	
129 20294	Westmoreland	Franklin	PGH CONSOLIDATION COAL (Hamilton, John #1 70A)	#1	
129 20292	Westmoreland	Franklin	PGH CONSOLIDATION COAL (Hamilton, John #2 70A)	#2	
129 00150	Westmoreland	Franklin	A J LUTZ (Lutz, Amanda J. #1 54A)	#1	
129 00152	Westmoreland	Franklin	F M WATT (Watt, Frank M. #3 57A)	#3	
129 20159	Westmoreland	Lower Burrell	ALLEGHENY LUDLUM STEEL (A. L. S. Corp. #1 20A)	#1	
129 20160	Westmoreland	Lower Burrell	ALLEGHENY LUDLUM STEEL (A. L. S. Corp. #1 123A)	#1	
129 20144	Westmoreland	Lower Burrell	H I ARNOLD (Arnold, H. I. #1 8A)	#1	
129 20074	Westmoreland	Lower Burrell	RICHARD A ARNOLD (Arnold, R. A. #1 90A)	#1	
129 20108	Westmoreland	Lower Burrell	JAMES M COOK (Cook, James M. #1 168A)	#1	
129 00128	Westmoreland	Lower Burrell	MARY M COPELAND (Copeland, M. M. #1 73A)	#1	
129 20189	Westmoreland	Lower Burrell	JAMES M COULSON (Coulson, J. M. #1 26A)	#1	
129 20203	Westmoreland	Lower Burrell	MICHELE CUGLIETTA (Cuglietta, Michele #1 15A)	#1	
129 20192	Westmoreland	Lower Burrell	ALBERT H ENDLICH (Endlich, A. H. #1 12A)	#1	
129 20349	Westmoreland	Lower Burrell	ALBERT JENNICHES (Jenniches, Albert #1 43A)	#1	
129 20177	Westmoreland	Lower Burrell	N W & MARY L KELLER (Keller & Orkis #1 10A)	#1	
129 20206	Westmoreland	Lower Burrell	A A LESLIE (Leslie, A. A. #1 50A)	#1	
129 20222	Westmoreland	Lower Burrell	A A LESLIE (Leslie, A. A. #2 50A)	#2	

RECEIVED

ENVIRONMENTAL PROTECTION  
NORTHWEST REGIONAL OFFICE  
OR & GAS  
DEC 26 2006

NOV 20 2006

DEP USE ONLY	Initial (DEP R.P.M. or other)
	SCA 1/8/07



Application for Transfer of Well Permit or Registration

<b>TRANSFER FROM</b>		<b>TRANSFER TO</b>	
Name	OGO#	Name	OGO#
T.W. PHILLIPS GAS AND OIL CO. 12913		T.W. PHILLIPS GAS SUPPLY CORP.	
<b>WELLS TO BE TRANSFERRED</b>			

DEP Permit/Reg # USE (Well API #)	County	Municipality	Farm Name	DEP Name (Co. Name)	Well No.	Proj/ Ser #
129 20119	Westmoreland	Lower Burrell	ANNA LESZCZYNSKI (Leszynski, Anna #1 25A)		#1	#1
129 20269	Westmoreland	Lower Burrell	S G MORROW (Morrow, S. G. #1 15A)		#1	#1
129 00130	Westmoreland	Lower Burrell	OIL WELL SUPPLY (Oil Well Supply Co. #6 222A)		#6	#6
129 00131	Westmoreland	Lower Burrell	OIL WELL SUPPLY (Oil Well Supply Co. #7 222A)		#7	#7
129 20150	Westmoreland	Lower Burrell	FRANK SCANGA,(Scanga, Frank #1 68A)		#1	#1
129 20289	Westmoreland	Lower Burrell	A ALVIN STEWART (Stewart, A. #1 26A)		#1	#1
129 20251	Westmoreland	Lower Burrell	GEORGE J TACK (Tack, G. J. #1 14A)		#1	#1
129 22360	Westmoreland	Loyalhanna	ROBERT W GRAY (Atlantic C. Co. #2 152A)		#2	#2
129 20259	Westmoreland	Loyalhanna	ATLANTIC CRUSHED COKE (Atlantic C. Co. #1 395A)		#1	#1
129 20215	Westmoreland	Loyalhanna	ATLANTIC CRUSHED COKE (Atlantic C. Co. #4 395A)		#4	#4
129 20481	Westmoreland	Loyalhanna	ATLANTIC CRUSHED COKE (Atlantic C. Co. #5 395A)		#5	#5
129 20433	Westmoreland	Loyalhanna	F E BASH (Bash, Frank E. #1 180A)		#1	#1
129 00171	Westmoreland	Loyalhanna	MA CICIO (Cicio, M. A. #1 138A)		#1	#1
129 20138	Westmoreland	Loyalhanna	D & B DEVELOPMENT (George, E. G. #1 260A)		#1	#1
129 00173	Westmoreland	Loyalhanna	KOONITZ & MARTIN (Koonitz & Martin #1 249A)		#1	#1
129 00174	Westmoreland	Loyalhanna	KOONITZ & MARTIN (Koonitz & Martin #2 249A)		#2	#2
129 20120	Westmoreland	Loyalhanna	LOYALHANNA DEVELOPMENT (L.D. Co. & U.S.A. #1 300A)		#1	#1
129 00176	Westmoreland	Loyalhanna	B M LEMON (Lemon, B. M. #2 200A)		#2	#2
129 20594	Westmoreland	Loyalhanna	CHARLES & GOLDIE LYONS (Lyons, S. H. #1 200A)		#1	#1
129 20599	Westmoreland	Loyalhanna	MARTHA K MOGNET (Mognet, Margaret K. #1 42A)		#1	#1
129 20164	Westmoreland	Loyalhanna	EMMA C PATTERSON (Patterson, E. C. #1 66A)		#1	#1
129 20407	Westmoreland	Loyalhanna	A ROMAN (Roman, Ann #1 137A)		#1	#1
129 20394	Westmoreland	Loyalhanna	A C STEELE (Steele, A. C. #1 120A)		#1	#1
129 20156	Westmoreland	Loyalhanna	MARY B & MADGE C WEAVER (Weaver & U.S.A. #1 156A)		#1	#1
129 20175	Westmoreland	Salem	J J DENT & N C STOTLER (Dent & Stotler #1 144A)		#1	#1
129 20327	Westmoreland	Salem	ANNA MARIE DOTTO (Dotto, Anna Marie #1 150A)		#1	#1
129 21130	Westmoreland	Salem	JAMES J MERICHKO (Merichko, James J. #1 107A)		#1	#1
129 20272	Westmoreland	Salem	J & L NEWHOUSE (Newhouse & Johnston #1 245A)		#1	#1
129 20244	Westmoreland	Salem	ALAN D REYNOLDS (Reynolds, A. D. #1 66A)		#1	#1
129 20254	Westmoreland	Salem	L G SEANOR (Seanor, R.A. #1 230A)		#1	#1
129 20134	Westmoreland	Salem	MILTON VUCISH (Vucish, Milton & U.S.A. #1 151A)		#1	#1
129 20216	Westmoreland	Salem	WYATT-SEANOR COAL (Wyatt - Seanor Coal Co. #1 400A)		#1	#1
129 20260	Westmoreland	Salem	WYATT-SEANOR COAL (Wyatt - Seanor Coal Co. #2 400A)		#2	#2
129 00133	Westmoreland	Upper Burrell	M BARNETT (Barnett, Minerva #1 40A)		#1	#1
129 00137	Westmoreland	Upper Burrell	J P HAMILTON (Hamilton, J. P. #1 81A)		#1	#1
129 00138	Westmoreland	Upper Burrell	J P HAMILTON (Hamilton, J. P. #2 81A)		#2	#2
129 00141	Westmoreland	Upper Burrell	M MCWILLIAMS (McWilliams, Maude #1 80A)		#1	#1
129 00139	Westmoreland	Upper Burrell	A T MILLER (Miller, A. T. #1 90A)		#1	#1
129 00142	Westmoreland	Upper Burrell	NANCY STEWART (Stewart, Nancy #1 88A)		#1	#1
129 00154	Westmoreland	Washington	VICTOR L ANDERSON (Anderson, Victor L. #1 75A)		#1	#1
129 00155	Westmoreland	Washington	VICTOR L ANDERSON (Anderson, Victor L. #2 75A)		#2	#2

RECEIVED

DEC 26 2006  
MAY 20 2006  
DEP, SOUTHWEST REGION ENVIRONMENTAL PROTECTION  
OIL & GAS NORTHWEST REGIONAL OFFICE

DEP USE ONLY	Initial (DEP R.P.M. or other)
--------------	-------------------------------



Application for Transfer of Well Permit or Registration

<b>TRANSFER FROM</b>		<b>TRANSFER TO</b>	
Name	OGC#	Name	OGC#
T.W. PHILLIPS GAS AND OIL CO. 12913		T.W. PHILLIPS GAS SUPPLY CORP.	
<b>WELLS TO BE TRANSFERRED</b>			
DEP Permit/Reg #	County	Municipality	Farm Name DEP Name (Co. Name)
129 00158	Westmoreland	Washington	WH & GF CROOKS (Crooks, W.H. & G.F. #1 51A)
129 00161	Westmoreland	Washington	ME LUDWICK (Ludwick, M. E. #2 70A)
129 00163	Westmoreland	Washington	PHILLIP RIDENOUR (Ridenour, Phillip #1 76A)
Total wells:			1151

Prof/ Ser #  
Well No.

RECEIVED

DEC 26 2006

DEP SOUTHWEST REGION  
ENVIRONMENTAL PROTECTION  
OIL & GAS  
NORTHWEST REGIONAL OFFICE

NOV 20 2006

DEP USE ONLY

Initial (DEP  
R.P.M. or other)



**T.W. PHILLIPS**  
GAS AND OIL CO.

DE: List of T.W. Phillips Gas and Oil Co.'s Wells Drilled after April 18, 1985

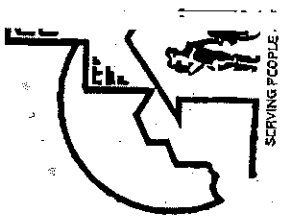
Well ID No.*	Well Name*	Date Drilled*	Current Status or Comments	Transfer
063-00161	Clark & Barbor 145A	8/25/1985	Drilled in 1955, no record of rework	Yes
063-00275	W. E. Youssef 1	12/14/1987	Drilled in 1948, converted to storage in 1974, reworked in 1987, and converted to production in 2003.	Yes
063-00348	Clark Est 78A 1		Drilled in 1937, converted to storage in 1974, reworked in 1989, and converted to production in 2003.	Yes
063-2085	W.P. Clark & J.O. Clark	9/5/1957	Drilled in 1957, converted to storage in 1974, reworked in 1989, and converted to production in 2003.	Yes
063-28307	Phillips Gas & Oil (Kuntz) 1	4/22/1985	Drilled in 1923 and reworked in 1974 and 1985.	Yes
063-29098	J. Blazavich et	5/2/1986	H.D. Ober #1 well drilled in 1928 and converted to storage in 1949.	No
063-30013	S. Lightcap, etux, Wissinger 6	10/15/1990	A.S. Wissinger #6 well drilled in 1990 as a storage well.	No
063-30869	Murray Baun #2 2	5/9/1994	Drilled in 1994 as a storage well and converted to production in 2000.	Yes
129-00173	tz and Martin 1		Drilled in 1952 and repaired a tubing hole in 1994.	Yes
019-20656	Tomia Irrapino 2	11/2/1999	Charles J, Harvey #2 storage well drilled in 1972.	No
019-21322	Thomas Hughes 2	9/29/1989	T.M. Hughes #2 storage well drilled in 1989.	No
019-21369	Portman 3	5/22/2000	A.J. Portman #3 storage well drilled in 2000.	No.
065-00250	Thomas 4A 7A 1	10/6/1986	Drilled in 1936 and reworked in 1960.	Yes
065-20860	Sam B. Benson 1	12/1/1971	Drilled in 1971 and reworked in 1988.	Yes
065-23631	Newcome 3	2/2/1993	Drilled in 1993 as a storage well and converted to production in 2004.	Yes

\* Inform: From DEP

DEC 26 2006

DEP, SOUTHWEST REGION





**T.W. PHILLIPS**  
GAS AND OIL CO.

205 North Main Street  
Butler, Pennsylvania 16001  
(724) 287-2751

December 2, 2006

Sharolight  
Pennsylvania Department of Environmental Protection  
Southwestern Regional Office  
Oil and Gas Management  
400 West Front Street  
Pittsburgh, Pennsylvania 15222-4745

Re: Exhibit A for Blanket Surety Bond for Oil and Gas Wells

Dear A: Right:

I thank you for your list of T.W. Phillips Gas and Oil Co.'s ("T.W. Phillips") 15 wells that were drilled or reworked after April 18, 1985. The list will be used to complete Exhibit A of the Blanket Surety Bond in connection with T. W. Phillips' transfer of gas wells to V. Phillips Gas Supply Corp. ("Supply Corp.").

The 10 wells listed in the attached exhibit are active storage wells and will not be transferred to Supply Corp. The remaining ten wells will be transferred to Supply Corp. and are shown on the enclosed Exhibit A. For clarification, a list of the 15 wells, their current status, and our transfer intentions is also enclosed.

If you have any questions or need additional information concerning this matter, please do not hesitate to contact me at 724-287-2751, Extension 232.

Sincerely,

*Keith*  
Keith

Vice President

Operations and Engineering

*W. J. Swenton*  
W. J. Swenton

President

Enclosure

DEC 26 2006

DEP, SOUTHWEST REGION  
Oil & Gas





PROGRAM O & C  
FILE NAME 019 - 00543  
BREAKDOWN Registration  
TYPE \_\_\_\_\_  
COUNTY Butler MUNICIPALITY \_\_\_\_\_  
COMMENTS \_\_\_\_\_

# WELL REGISTRATION FORM

To be used for well(s) not permitted or issued drilling file numbers under Act 225, The Pennsylvania Gas Operations, Well-Drilling, Petroleum and Coal Mining Act. Supply all available information.

DER USE ONLY

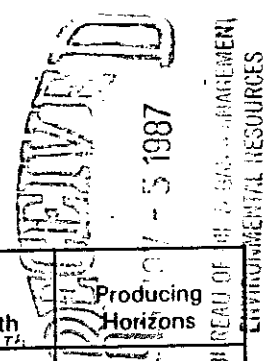
Code
<i>GML/M 9-25-85</i>

T. W. Phillips Gas and Oil Co.  
Operator Name  
205 N. Main St.  
Address  
Butler, PA 16001  
412-287-2751  
Telephone #

<small>Agent</small>	<small>Signature</small>
<small>Address</small>	<small>Address</small>
<small>Telephone #</small>	<small>Telephone #</small>

Project # 019 If previously assigned by Dept.

County Butler



For Department Use Only	API/Registration #	Municipality	Farm Name	Well#	Serial # Optional	Date Drilled	Type Well	T.D.	Casing Record Size(diam.) Length (ft.)	Type and amount of cement	Packers Size/Type/Setting/Length	Producing Horizons
019	00540	Winfield Township	Clymer Hrs. - 50A	20		1946	Gas	1693'	8-1/4" 50' 6-1/4" 747' 4-7/8" 1271'		6 1/2" Bottom Home 747' 4-7/8" Wall 1271'	1262'-1430'
11	00541	Winfield Township	J. McLaughlin - 55A	2		1924	Gas	1775'	6-1/4" 800' 4" 920'		4" Wall 920'	1180'-1250' 1541'-1659' Gas at 1605'
11	00542	Clearfield Township	W. S. Magee - 116A	1		1900	Gas	2525'	6-1/4" 638' 3" Pulled		6-1/4" Bottom Home 638'	2420'-2445'
11	00543	Clearfield Township	M. J. Sloan - 51A	4		1924	Gas	2751'	6-1/4" Pulled 3" 1488'		3" Wall 1488'	1630'-1646' 2580'-2613'
11	00544	Clearfield Township	M. J. Sloan - 51A	5		1924	Gas	2665'	6-1/4" Pulled 3" 1734'		3" Wall 1734'	2525'=2531
11	00545	Jefferson Township	I. P. Burtner - 1A	1		1910	Gas	2600'	6-1/4" Pulled 2" 2600'		2" Anchor 2540'	No Drilling Record 2540'-2600'
11	00546	Buffalo Township	Matthew Falkner - 63A	1		1903	Gas	3208'	6-1/4" Pulled 2" 3208'		2" Anchor 1890'	2723'-2741'

**Attachments Needed:**

- 7 1/2 minute topographic map or other description to enable the Department to find the well site on the ground
- Proof of bond or blanket bond
- Alternate fees in lieu of bond
- Driller's log (if available)
- Registration fee of \$15 per well or \$250 for blanket registration on well registrations submitted simultaneously for same project.

The registration number issued pursuant to this registration form shall be installed on the well in a legible, conspicuous and permanent manner within 60 days of issuance.



W.C.B # 1839

(1636)

### DRILLERS' RECORD

Well No. H 1 on J. W. Phillips Gas Oil & Coal Farm of 5.0 acres in Cedarfield Twp. Butler County, Pa.  
 Bounded North by J. W. Phillips South by J. W. Phillips  
 East by D. G. Gallagher West by D. G. Gallagher  
 This well is located about 90 feet from the East line and about 200 feet from the North line of the farm drilled for the J. W. Phillips Gas Oil & Coal Company and completed in the month of August 1924.  
 Cased with 2.20 inch casing set in sand on bottom hole packer.  
 Cased with 3.82 inch casing set in sand on bottom hole packer.  
 Coal veins 3.82 feet to 3.85 feet - 3 feet.

Limestone

Kind of formation Sand or Slate, etc.	Top	Bottom	Thick-ness	Dist. from top of H. F.	If Sand, give name	Description	If it contains gas, oil or water, state quantity and where in the sand found
Sand	390	464	74		60 ft.		
"	490	708	218		70 ft.		
"	740	920	180		Squaw		
"	985	1075	90				
"	1320	1405	85		Gas sand		
"	1410	1506	126		100 ft.		
"	1555	1575	20	145	30 ft.		
"	1630	1646	16	220	Boulder		Gas 1644 - burnt 2 ft.
"	1685	1702	17	275	Fourth		
"	1782	1795	13	372	Fifth		
"	2235	2243	8	825	First Marren		
"	2580	2613	33	1170	Speedley		Gas 2583



BUREAU OF ENVIRONMENTAL RESOURCES

Remarks: Had trouble to get the 6 1/4" casing tight, leaked at 10' near the bottom. Guy pulled 4 inches - 6 1/4" casing 820 ft. set in sand on a bottom hole packer.

The above record was NOT copied by me until it had been O. K'd or approved on the 25 day of Aug 1924.  
 by Supt. R.A.D. D.M.





